



OSTEND SAILING WEEKEND SEPTEMBER 21 AND 22, 2024 SAILING INSTRUCTIONS

Organizing Authority:
RNSYC

Montgomerykaai 1 - 8400 Oostende www.rnsyc.be

Office +32(0)59/43.06.94 regatta@rnsyc.be - Harbour Master +32(0)59/50.59.12 simon@rnsyc.be

Clubhouse-bar-restaurant: +32(0)59/70.27.54 clubhouse@rnsyc.be

The notation '[NP]' in a rule means that a boat may not protest another boat for breaking that rule. This changes RRS 60.1(a).

All times in this notice of race are in Belgian summertime GMT+2 24-hour format.

1 RULES

The event is governed by the rules as defined in *The Racing Rules of Sailing* and as stated in the notice of race.

2 CHANGES TO SAILING INSTRUCTIONS

Any change to the sailing instructions will be posted before 09:00 h on the day it will take effect, except that any change to the schedule of races will be posted by 20:00 h on the day before it will take effect.

3 COMMUNICATIONS WITH COMPETITORS

3.1 Notices to competitors will be posted on the official notice board located at <https://bit.ly/ostendsw2024>

3.2 The race office is located at the ground floor of the royal North Sea Yacht Club, telephone +32 468 41 56 48 (only from 20/09/2024 12:00 h till 22/09/2024 20:00 h), email ro@rnsyc.be

3.3 On the water, the race committee intends to monitor and communicate with competitors on VHF radio channel 13.

3.4 The following communications may be made by the race committee on VHF channel 13: Info about start times, length and bearing of first leg, course description, recalls, etc.

3.5 [DP] While racing, except in an emergency, a boat shall not make voice or data transmissions and shall not receive voice or data communication that is not available to all boats.

4 CODE OF CONDUCT

4.1 [DP] Competitors and support persons shall comply with reasonable requests from race officials.

5 SIGNALS MADE ASHORE

5.1 Signals made ashore will be displayed at the flagpole south of the clubhouse.

5.2 When flag AP is displayed ashore, '1 minute' is replaced with 'not less than 60 minutes' in Race Signals AP.

6 SCHEDULE OF RACES

6.1 Dates and number of races:

Date	Class	Number of races
Saturday 21/9	IRC, J-80, SB20, Halfton	Maximum 4
	CR	Maximum 2
Sunday 22/9	IRC, J-80, SB20, Halfton	Maximum 4
	CR	Maximum 2

THANKS TO OUR PARTNERS





6.2 The scheduled time of the warning signal for the first race each day is:

Date	CR	IRC	One Design with 6 or more entries
Saturday 21/9	11:30 h	11:45 h	12:00 h
Sunday 22/9	10:30 h	10:45 h	11:00 h

6.3 To alert boats that a race or sequence of races will begin soon, the orange starting line flag will be displayed with one sound five minutes before a warning signal is made.

6.5 On the last scheduled day of racing no warning signal will be made after 15:30 h.

7 **CLASS FLAGS**

7.1 The class flags are:

Class	Flag
CR 1-2-3-4	W
CR 5-6	F
IRC 1+2	White flag
IRC 3	Purple flag
J-80	J
Halfton	Numeric pennant 5
SB20	E

8 **RACING AREA**

8.1 SI Addendum 1 shows the location of the racing area(s).

9 **COURSES**

9.1 Marks to round at port or starboard are indicated by R/P or R/S respectively, marks to leave at port or starboard are indicated by L/P or L/S respectively. Up-downwind course diagram see addendum 2.

Pink Course	Up-down	Start - 1 R/P - 2 R/P - 4p/4s - 1 R/P - 2 R/P - 4p R/P - Finish FOR IRC1+2	2 loops
Green Course	Up-down	Start - 1A R/P - 2A R/P - 4p/4s - 1A R/P - 2A R/P - 4p R/P - Finish FOR IRC 3 and J80-SB20-Halfton	2 loops
Course 01	N	start Binnenstroombank-O1 R/P-Buitenstroombank R/P-Binnenstroombank R/P-O1 R/P- Binnenstroombank R/P-O1 R/P-finish Binnenstroombank.	9 NM
Course 02	NO	start boei"2"-O3 R/P-Buitenstroombank R/P-BOEI "4" R/P- boei"2" R/P-BOEI "4" R/P- boei"2" R/P-BOEI "4" R/P- finish boei"2".	10,5 NM
Course 03	ONO	start boei"O"- Binnenstroombank R/P- Buitenstroombank R/P-boei"O" R/P- Binnenstroombank R/P- boei"O" R/P- finish Binnenstroombank.	7,5 nm
Course 04	O	start boei"O"-boei"S" R/P- Buitenstroombank R/P-boei"O" R/P- boei"S" R/P- boei"O" R/P- finish boei"S".	8 NM
Course 05	ZO	start boei"2"-boei"S" R/S-boei"O" R/S-Buitenstroombank R/S-boei"S" R/S- Buitenstroombank R/S-finish boei"S".	8,5 NM
Course 06	Z	start aan Buitenstroombank-BOEI "4" R/P-Binnenstroombank R/P-O1 R/P- Binnenstroombank R/P-O1 R/P-finish Binnenstroombank.	8,5 NM
Course 07	ZW	start Binnenstroombank-BOEI "4" R/S-boei"O" R/S-Binnenstroombank R/S-BOEI "4" R/S-Binnenstroombank R/S- BOEI "4" R/S-finish Binnenstroombank.	9 NM

THANKS TO OUR PARTNERS





Course 08	WZW	start Binnenstroombank-boei"O" R/P-BOEI "4" R/P- Binnenstroombank R/P-boei"O" R/P-Binnenstroombank R/P-boei"O" R/P-finishBinnenstroombank.	7,5 NM
Course 09	W	start boei"S"-boei"O" R/P-BOEI "4" R/P-boei"S" R/P-boei"O" R/P-boei"S" R/P-boei"O" R/P-finish boei"S".	9 NM
Course 10	NW	start Binnenstroombank-Buitenstroombank R/P-boei"O" R/P-Binnenstroombank R/P-Buitenstroombank R/P-Binnenstroombank R/P-Buitenstroombank R/P-finish Binnenstroombank.	9 NM
Course 11	N	Start Yellow "O" - Oostendebank E R/S - Binnenstroombank R/S - BOEI "4" R/S - Finish Yellow "O"	8 NM
Course 12	NNW	Start Binnenstroombank - Buitenstroombank R/P - BOEI "4" R/P - Buitenstroombank R/ P- Yellow "O" R/P - Finish Binnenstroombank	7 NM
Course 13	WNW	Start Binnenstroombank - Buitenstroombank R/P - Yellow"O" R/P - Binnenstroombank R/P - Buitenstroombank R/P - Finish Binnenstroombank	7 NM
Course 14	WSW	Start Binnenstroombank - Yellow "O" R/P - BOEI "4" R/ P - Binnenstroombank R/P - Yellow"O" R/P - Finish Binnenstroombank	6 NM
Course 15	SSW	Start Binnenstroombank - BOEI "4" R/S - Yellow "O" R/S - Binnenstroombank R/S - BOEI "4" R/S - Finish Binnenstroombank	6 NM
Course 16	S	Start Yellow "O" - BOEI "4" R/P - Wenduinebank W R/P - finish Binnenstroombank	8 NM
Course 17	S	Start Yellow "O" - BOEI "4" R/P - O1 R/S - Binnenstroombank R/S - O1 R/S - Finish Binnenstroombank	10 NM
Course 18	SE	Start Yellow "O" - BOEI "4" R/P - Buitenstroombank R/S - Binnenstroombank to R/S - Buitenstroombank R/S - Finish Binnenstroombank	8 NM
Course 19	E	Start Yellow "O" - Binnenstroombank R/P - Buitenstroombank R/P - Yellow "O" R/P - Binnenstroombank R/P - Yellow "O" R/P - Finish Binnenstroombank"	7 NM
Course 20	NE	Start Yellow "O" - O1 R/P - Buitenstroombank R/P - BOEI "4" R/P - Finish Binnenstroombank	7 NM
Course 21	N	Start Yellow "O" - Oostendebank E R/S - O1 R/S - Yellow "O" R/S - Oostendebank E R/S - Finish Binnenstroombank	13 NM
Course 22	NW	Start Binnenstroombank - Wenduinebank W R/P - Zuidstroombank R/P - Finish Binnenstroombank	13 NM
Course 23	WSW	Start Binnenstroombank - Zuidstroombank R/S - Buitenstroombank R/S - Finish Binnenstroombank	10 NM
Course 24	SSW	Start Binnenstroombank - BOEI "4" R/S - Buitenstroombank R/P - Zuidstroombank R/P-Finish Binnenstroombank	11 NM
Course 25	S	Start Buitenstroombank - Yellow "O" R/S - Oostendebank W R/S - Oostendebank E R/S - Finish Binnenstroombank	14 NM
Course 26	NE	Start Yellow "O" - O1 R/P - Buitenstroombank R/P - Zuidstroombank R/P - Finish Binnenstroombank	12 NM
Course 27	NNE	Start Binnenstroombank - WK7 R/P - Buitenstroombank R/P - Finish Binnenstroombank	11 NM

THANKS TO OUR PARTNERS





Course 28	NW	Start Binnenstroombank - Oostendebank W R/S - Oostendebank E R/S - Finish Binnenstroombank	14 NM
Course 29	WNW	Start Binnenstroombank - Oostendebank W R/S - Oostendebank E R/S - Buitenstroombank R/P - Finish Binnenstroombank	14 NM
Course 31	W	Start Binnenstroombank - LST420 R/P - Zuidstroombank R/P - Finish Binnenstroombank	18 NM
Course 32	SW	Start Binnenstroombank - Oostendebank W R/S - Finish Binnenstroombank	12 NM
Course 33	SE	Start Buitenstroombank - Binnenstroombank R/P - Wenduinebank W R/P - Oostendebank W R/P - Finish Binnenstroombank	15 NM
Course 34	NNE	Start Binnenstroombank - WK7 R/P - Buitenstroombank R/S - Wk16 R/S - Finish Binnenstroombank	17 NM
Course 35	NE	Start Binnenstroombank - Wenduinebank E R/P - Oostendebank E R/P - Finish Binnenstroombank	16 NM
Course 36	E	Start Yellow "O" - Binnenstroombank R/P - Zuidstroombank R/S - Middelkerkebank S R/S - Finish Yellow "O"	16 NM
Course 37	E	start Yellow "O", Binnenstroombank R/P, Buitenstroombank R/P, Yellow "O" R/P, Binnenstroombank R/P, Buitenstroombank R/P, Yellow "O" R/P, Binnenstroombank R/P, Buitenstroombank R/P, Finish Yellow "O".	10 NM
Course 38	E	start Yellow "O", Binnenstroombank R/P, Buitenstroombank R/P, yellow "O" R/P, Binnenstroombank R/P, Buitenstroombank R/P, , Finish Yellow "O".	
Course 39	E	start Yellow "O", Binnenstroombank R/P, Buitenstroombank R/P, Middelkerkeband S R/P, Buitenstroombank R/S, Finish Yellow "O"	157 NM

9.2 No later than the warning signal, the race committee signal vessel will announce the approximate compass bearing of the first leg for upwind-downwind courses on VHF channel 13.

9.3 When one gate mark is missing, the remaining mark shall be rounded to port.

10 **MARKS FOR WINWARD - LEEWARD RACES**

10.1 Mark 1A - 2A are yellow cylindrical buoys, mark 1 - 2 - 4p - 4s are orange cylindrical buoy's, the pin-end mark is a yellow cylindrical buoy or a pole with an orange flag on a RIB, the finish buoy is a light blue cylindrical buoy.

11 **OBSTRUCTIONS**

11.1 Avoid the harbor channel once you are north of the green buoy "O5" or the red buoy "O6", the zone between cardinal buoy "OH9" and the western harbor wall (rocks only visible at low tide) and the no-go-zone (fines!!) around RT1 delimited by cardinal buoys BA-N, BA-E, BA-S and BA-W. Also respect the harbor lights of Ostend Port. See addendum 3.

12 **THE START**

- 12.1 Before the warning signal, the Race Committee will announce the course to sail on VHF channel 13.
- 12.2 Races will be started using RRS 26 with the warning signal made 5 minutes before the starting signal.
- 12.3 The starting line is between a staff displaying an orange flag on the signal vessel at the starboard end and the port-end starting mark.
- 12.4 [NP] [DP] Boats whose warning signal has not been made shall avoid the starting area during the starting sequence for other races.
- 12.5 If any part of a boat's hull is on the course side of the starting line at her starting signal and she is identified, the race committee will attempt to hail her name or sail number. Failure to hail her number or name,

THANKS TO OUR PARTNERS





failure of her to hear such a hail, or the order in which boats are hailed will not be grounds for a redress for request. This changes RRS 62.1(a).

12.6 A boat that does not start within 5 minutes after her starting signal will be scored Did Not Start without a hearing. This changes RRS A5.1 and A5.2.

13 **CHANGE OF THE NEXT LEG OF THE COURSE**

13.1 To change the next leg of the course, the race committee will move the original mark or the finishing line to a new position.

14 **THE FINISH**

14.1 The finishing line is between a staff displaying a blue flag on the finishing signal vessel and the finishing mark.

15 **PENALTY SYSTEM**

15.1 The two-turns penalty is replaced by the One-Turn Penalty.

15.2 A boat that has taken a penalty shall send an acknowledgement using the “Competitor’s Declarations” form available on <https://juryterminal.manage2sail.com/> before the end of the protest time

16 **TIME LIMITS AND TARGET TIMES FOR UP-DOWNWIND RACES**

16.1 The Mark 1 Time Limit, Race Time Limit (see RRS 35), and the Finishing Window for upwind-downwind are shown in the table below.

Class	Time limit Mark 1 /1A	Time limit	Target time	Finishing window
All	40 min	100 min	75 min	20 min

16.2 If no boat has passed the first mark within the Mark 1 Time Limit, the race will be abandoned.

16.3 The Finishing Window is the time for boats to finish after the first boat sails the course and finishes. Boats failing to finish within the Finishing Window, and not subsequently retiring, penalized, or given redress, will be scored Time Limit Expired (TLE) without a hearing. A boat scored TLE shall be scored points for the finishing place one more than the points scored by the last boat that finished within the Finishing Window. This changes RRS 35, A5.1, A5.2 and A10.

16.4 Failure to meet the Target Time will not be grounds for redress. This changes RRS 62.1(a).

17 **HEARING REQUESTS**

17.1 The protest time limit will be posted on the official notice board.

17.2 Hearing requests and requests to review a boats score shall be submitted by using the online form available on <https://juryterminal.manage2sail.com/>. Your password will be sent to the mail addresses of the registrant and helm specified in your entry form on Friday 20/09/2022 before 22:00 h. (This changes RRS 61.2, 61.3, 62.2 and 66).

17.3 Blank diagram forms will be available on the blackboard left from the sliding entry door of the clubhouse. A picture of your diagram can be added to any filed hearing request.

17.4 Notices will be posted to inform competitors of hearings in which they are parties or named as witnesses. Hearings will be held in the protest room, located at the meeting room behind the harbors’ master desk beginning at the time posted.

18 **SCORING**

18.1 3 races are required to be completed to constitute a series.

18.2 When 4 or more races have been completed, a boat’s series score is the total of her race scores excluding her worst score.

19 **SAFETY REGULATIONS**

THANKS TO OUR PARTNERS





- 19.1 [DP] A boat that retires from a race shall notify a race committee, safety/patrol, or jury boat as soon as possible and the race office immediately after returning to the shore.
- 20 **REPLACEMENT OF CREW OR EQUIPMENT**
- 20.1 Any request to change equipment such as sail numbers or requests to change a crewmember shall be made through <https://juryterminal.manage2sail.com/>. This also applies to participants that want to use a spi with a sailing number non-corresponding with the number in the main sail!
- 20.2 [DP] Substitution of competitors is not allowed without prior approval by the principal race officer or the race office secretary.
- 20.3 [DP] Substitution of damaged or lost equipment is not allowed unless authorized in writing by the principal race officer or the race office secretary. Requests for substitution shall be made to the committee at the first reasonable opportunity, which may be after the race.
- 20.4 Approved crew or equipment substitutions will be confirmed on the notice board.
- 21 **EQUIPMENT AND MEASUREMENT CHECKS**
- 21.1 A boat or equipment may be inspected at any time for compliance with the class rules, notice of race and sailing instructions.
- 21.2 [DP] When instructed by a race official on the water, a boat shall proceed to a designated area for inspection.
- 22 **SPARE**
- 23 **[NP] OFFICIAL VESSELS**
Official vessels will be identified as follows:
- Race committee boat: PRO
 - Mark layers: RC
 - Jury boats: yellow Flag with JURY
- 24 **[NP] [DP] SUPPORT TEAMS**
- 24.1 Support teams, including all support persons and support person vessels, shall comply with the support team regulations of the notice of race.
- 25 **[DP] TRASH DISPOSAL**
For hygienic reasons, trash may not be placed aboard official vessels.
- 26 **BERTHING**
See notice of race § 18
- 27 **HAUL-OUT RESTRICTIONS**
See notice of race § 19
- 28 **DIVING EQUIPMENT AND PLASTIC POOLS**
See notice of race § 20
- 29 **PRIZES**
See notice of race § 24
- 30 **RISK STATEMENT**
See notice of race § 22
- 31 **INSURANCE**
See notice of race § 23
- 32 **ORGANISATION**
The principal race officer is Dirk Sledsens.
The chairman of the protest committee is An Van Landeghem

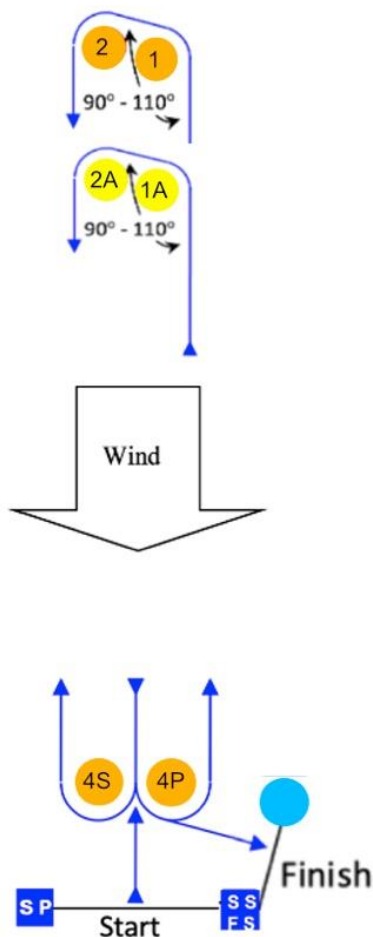
SI ADDENDUM 1 : race area

THANKS TO OUR PARTNERS





SI ADDENDUM 2: UPWIND DOWNWIND COURSES

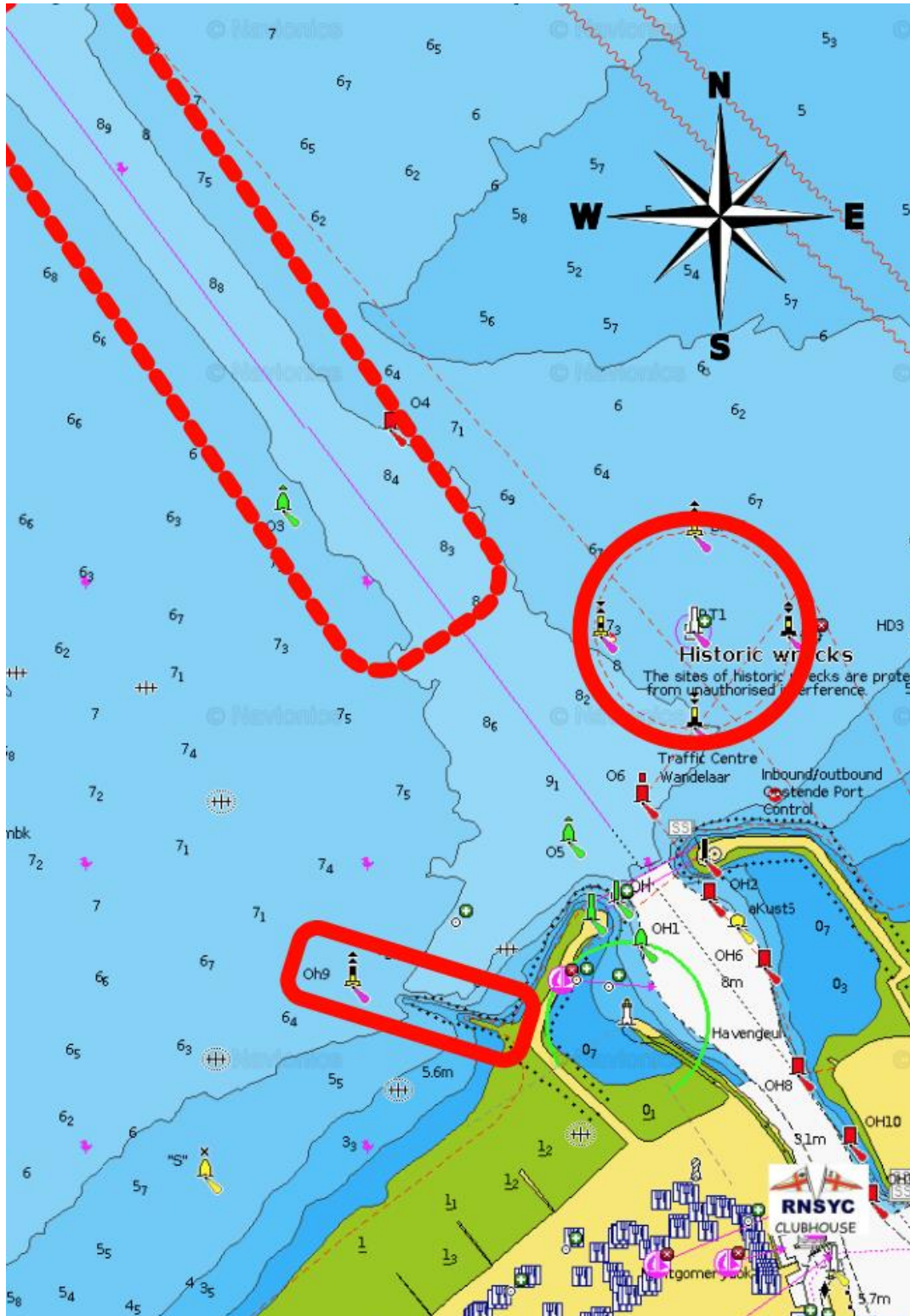


THANKS TO OUR PARTNERS





ADDENDUM 3 : OBSTRUCTIONS



THANKS TO OUR PARTNERS





HARBOUR LIGHTS

- | | | | |
|-------|--|--|---|
| 1 | | <p>F
L
A
S
H
I
N
G</p> | <p>Grave emergency

All vessels must make way according to instructions</p> |
| <hr/> | | | |
| 2 | | | <p>Vessels should clear the waterway and the channel immediately and by the shortest way</p> |
| <hr/> | | | |
| 3 | | | <p>one way traffic

Vessels may only sail in the indicated direction</p> |
| <hr/> | | | |
| 4 | | | <p>Two way traffic

Traffic may pass in both directions</p> |
| <hr/> | | | |
| 5 | | | <p>One way traffic

Only the vessel with permission to do so may sail in the indicated direction. Other vessels must clear the fair way and approach immediately and in the shortest way possible</p> |

1. Two traffic signs facing towards land will be placed under a yellow flickering light at the entrance of the Montgomery dock: the top one showing red arrows, the bottom one green ones.
Following sailing instructions will be given:

	<p>Forbidden: direction</p>	<p>-sea -fishing lock+tidal dock -back port</p>
<hr/>		
	<p>Allowed: direction</p>	<p>-sea -fishing lock+tidal dock -back port</p>

THANKS TO OUR PARTNERS





[Notice Board](#)



[Juryterminal](#)



[Hearings schedule](#)



[Results](#)



[Parking Registration](#)



[Join the WhatsApp group for this race](#)

THANKS TO OUR PARTNERS

