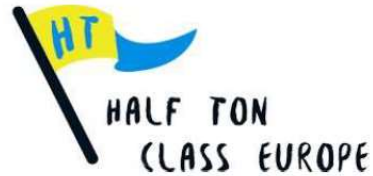


Half Ton Classics Cup

5th – 9th August 2024



Addendum 2 to the Sailing Instructions

COURSES AND MARKS

1 Starting line

- 1.1 The starting line is between a staff displaying an orange flag on the signal vessel at the starboard end and the course side of the port-end starting mark.

2 Finishing line

- 2.1 The finishing line is between a staff displaying a blue flag on the signal vessel at the starboard end and the course side of the port end finishing mark.

3 Marks

- 3.1 Course 00 is a laid course, marks are described in the course description.
- 3.2 Following navigational buoys can be used in courses 01 to 50 :
(positions are approximative and not to be used for navigation)

	N		E		Lat	Long	
BinnenstroomBk	51	14,471	2	53,657	51,24118	2,89428	Cardinal East
BuitenstroomBk	51	15,166	2	51,719	51,25277	2,86198	Cardinal North
D1	51	13,950	2	38,591	51,23250	2,64318	Cardinal East
HD12	51	9,643	2	41,337	51,16072	2,68895	Conical Yellow
HNP	51	9,611	2	41,511	51,16018	2,69185	Pillar Yellow
KYCN	51	9,880	2	43,000	51,16467	2,71667	Conical Yellow
Middelkerkebank S	51	14,736	2	41,883	51,24560	2,69805	Lateral Red
NieuwpoortBk	51	10,170	2	36,087	51,16950	2,60145	Cardinal West
OostendeBk-W	51	16,202	2	44,757	51,27003	2,74595	Cardinal West
Trapegeer	51	8,422	2	34,379	51,14037	2,57298	Lateral Green
WeststroomBk	51	11,335	2	43,039	51,18892	2,71732	Lateral Red
Whitley	51	9,151	2	39,437	51,15252	2,65728	Cardinal North
Wk1	51	8,300	2	35,040	51,13833	2,58400	Cardinal North
Wk2	51	8,100	2	37,438	51,13500	2,62397	Cardinal North
Wk3	51	9,048	2	39,604	51,15080	2,66007	Cardinal South
Wk4	51	10,984	2	40,104	51,18307	2,66840	Cardinal South
ZuidstroomBk	51	12,292	2	47,377	51,20487	2,78962	Lateral Red

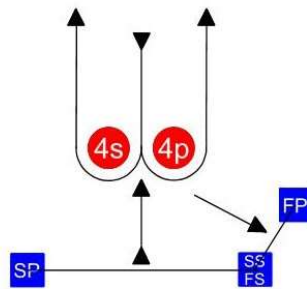
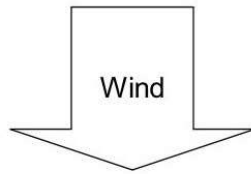
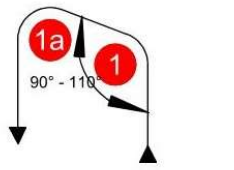
Other marks are described in the course description.

- 3.3 Mark HD12 consists of 3 floating devices: one central measuring device and two warning buoys. All 3 must be passed on the side defined in the course description.
- 3.4 Positions, headings and distances are approximative, given only for information and are not to be used for navigation.
Any error in these data will not be grounds for a redress for request. This changes RRS 62.1(a).
- 3.5 Position of start and Mark 1 will be decided on site, although Mark 1 will be anchored in the area bound by buoys KYCN, HNP, Wk4 and WeststroomBk.
As a result, Start and Mark 1 are not shown on the course description and the leg from Mark 1 to the next mark is shown as a dotted line starting from the median possible position of Mark 1.

Course Illustration: Laid course – Windward-Leeward, offset mark, gate

00

Course length: 6 to 9 NM



Mark rounding order

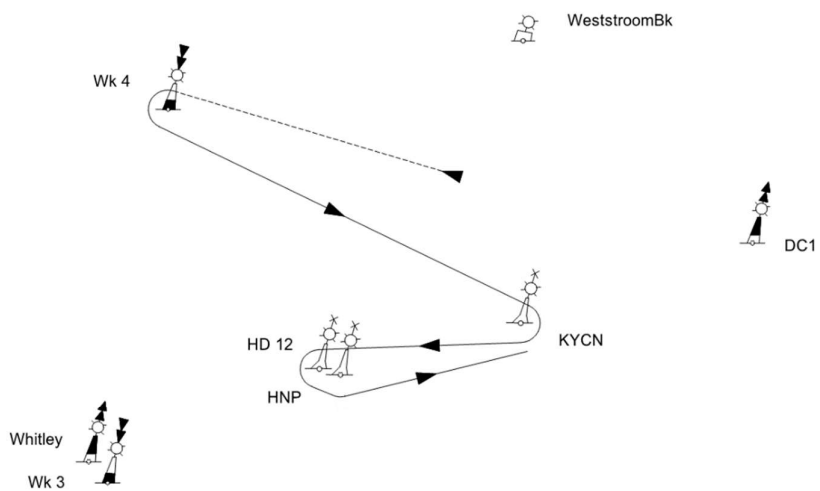
Start – 1 – 1a – 4s/4p – 1 – 1a – 4s/4p – 1 – 1a – 4p - Finish

Mark	Description
1	1 to 1,5 NM to windward of start Red cubical inflatable buoy
1a	Red cubical inflatable buoy
4s 4p	Red cylindrical inflatable buoy
SS FS	Starting mark starboard end Finishing mark starboard end RC Signal boat
SP	Starting mark port end Orange cylindrical inflatable buoy
FP	Finishing mark port end Red cylindrical inflatable buoy

Course Illustration: Course around the cans

01

Course length: 6,7 NM



	Mark rounding order
	Start, Mark 1 (P), Wk4 (P), KYCN (SB), HD12 (P), HNP (P), Finish

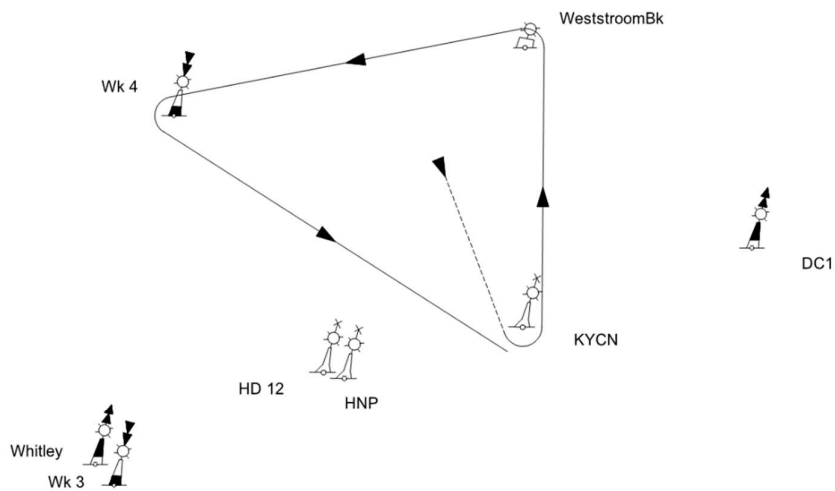
Mark	Description
Mark 1	0,7 to 1,3 NM to windward of start Red cubical inflatable buoy
Other	Navigational buoys
Starting mark starboard end Finishing mark starboard end	RC Signal boat

Starting mark port end	Orange cylindrical inflatable buoy
Finishing mark port end	KYCN Navigational buoy

Course Illustration: Course around the cans

02

Course length: 7,3 NM

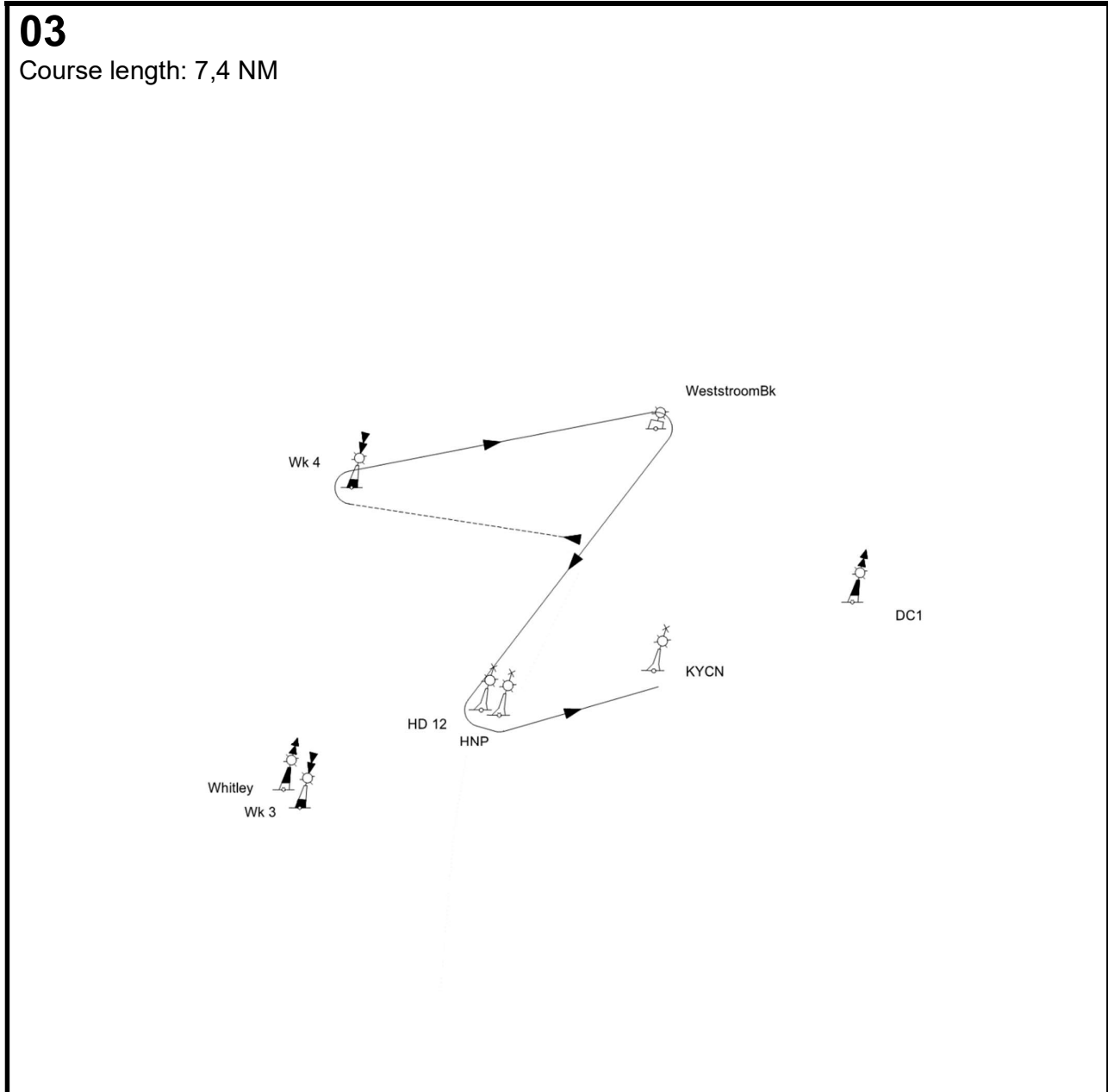


	Mark rounding order
	Start, Mark 1 (P), KYCN (P), WeststroomBk (P), Wk4 (P), Finish

Mark	Description
Mark 1	0,7 to 1,3 NM to windward of start
Other	Red cubical inflatable buoy
	Navigational buoys

Starting mark starboard end	RC Signal boat
Finishing mark starboard end	RC Signal boat
Starting mark port end	Orange cylindrical inflatable buoy
Finishing mark port end	KYCN Navigational buoy

Course Illustration: Course around the cans



	Mark rounding order
	Start, Mark 1 (P), Wk4 (SB), WeststroomBk (SB), HD12 (P), HNP (P), Finish

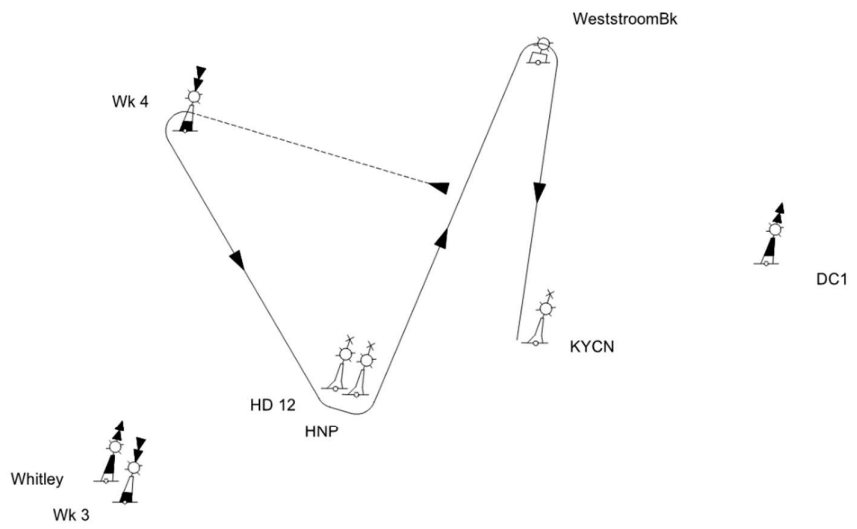
Mark	Description
Mark 1	0,7 to 1,3 NM to windward of start Red cubical inflatable buoy

Other	Navigational buoys
Starting mark starboard end Finishing mark starboard end	RC Signal boat
Starting mark port end	Orange cylindrical inflatable buoy
Finishing mark port end	KYCN Navigational buoy

Course Illustration: Course around the cans

04

Course length: 7,5 NM



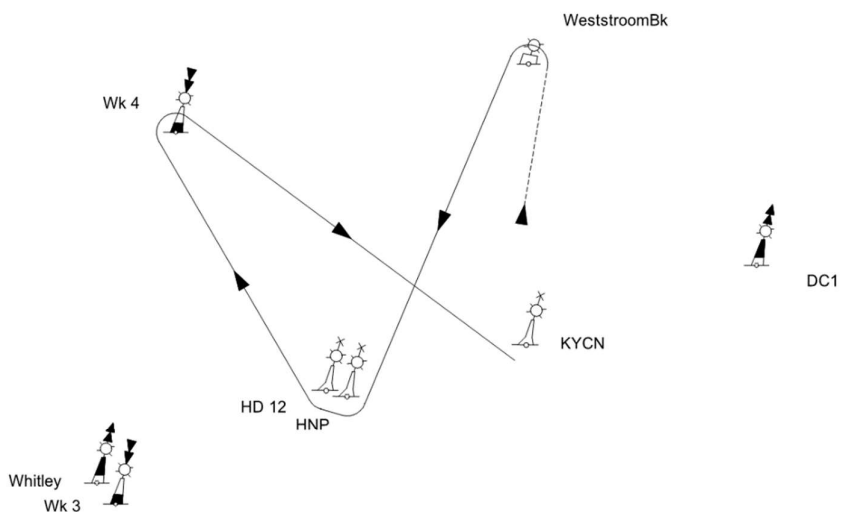
	Mark rounding order
	Start, Mark 1 (P), Wk4 (P), HD12 (P), HNP (P), WeststroomBk (SB), Finish

Mark	Description
Mark 1 0,7 to 1,3 NM to windward of start	Red cubical inflatable buoy
Other	Navigational buoys
Starting mark starboard end Finishing mark starboard end	RC Signal boat
Starting mark port end	Orange cylindrical inflatable buoy
Finishing mark port end	KYCN Navigational buoy

Course Illustration: Course around the cans

05

Course length: 7,6 NM



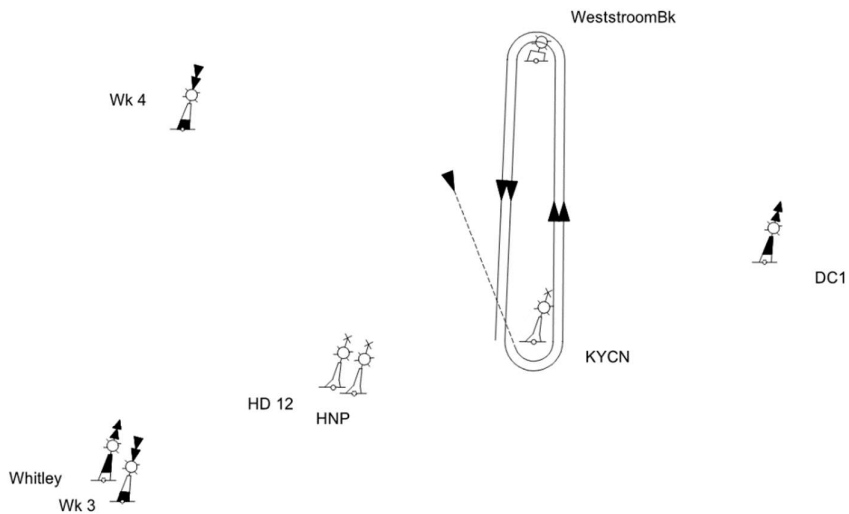
Mark rounding order
Start, Mark 1 (P), WeststroomBk (P), HNP (SB), HD12 (SB), Wk4 (SB), Finish

Mark	Description
Mark 1 0,7 to 1,3 NM to windward of start	Red cubical inflatable buoy
Other	Navigational buoys
Starting mark starboard end Finishing mark starboard end	RC Signal boat
Starting mark port end	Orange cylindrical inflatable buoy
Finishing mark port end	KYCN Navigational buoy

Course Illustration: Course around the cans

06

Course length: 7,7 NM



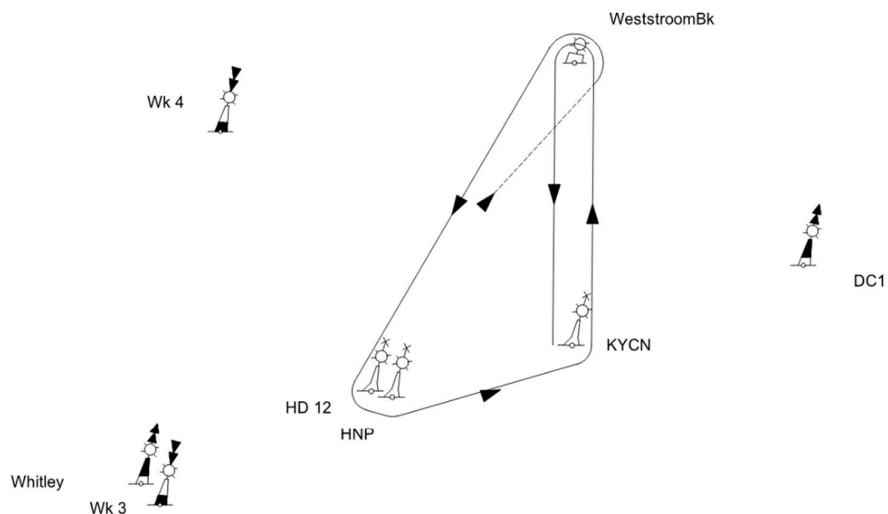
	Mark rounding order
	Start, Mark 1 (P), KYCN (P), WeststroomBk (P), KYCN (P), WeststroomBk (P), Finish

Mark	Description
Mark 1 0,7 to 1,3 NM to windward of start	Red cubical inflatable buoy
Other	Navigational buoys
Starting mark starboard end Finishing mark starboard end	RC Signal boat
Starting mark port end	Orange cylindrical inflatable buoy
Finishing mark port end	KYCN Navigational buoy

Course Illustration: Course around the cans
--

07

Course length: 7,8 NM



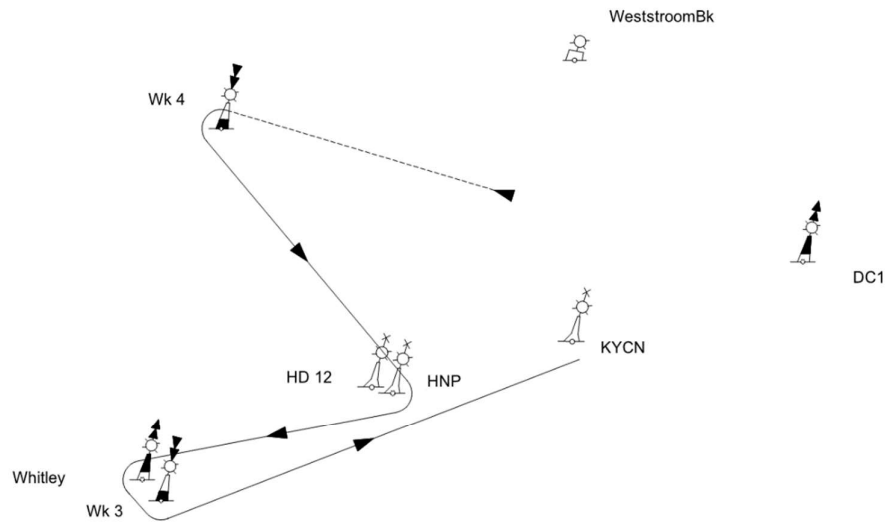
	Mark rounding order
	Start, Mark 1 (P), WeststroomBk (P), HD12 (P), HNP (P), KYCN (P), WeststroomBk (P), Finish

Mark	Description
Mark 1	0,7 to 1,3 NM to windward of start
Other	Red cubical inflatable buoy
	Navigational buoys
Starting mark starboard end	RC Signal boat
Finishing mark starboard end	
Starting mark port end	Orange cylindrical inflatable buoy
Finishing mark port end	KYCN Navigational buoy

Course Illustration: Course around the cans

08

Course length: 7,9 NM



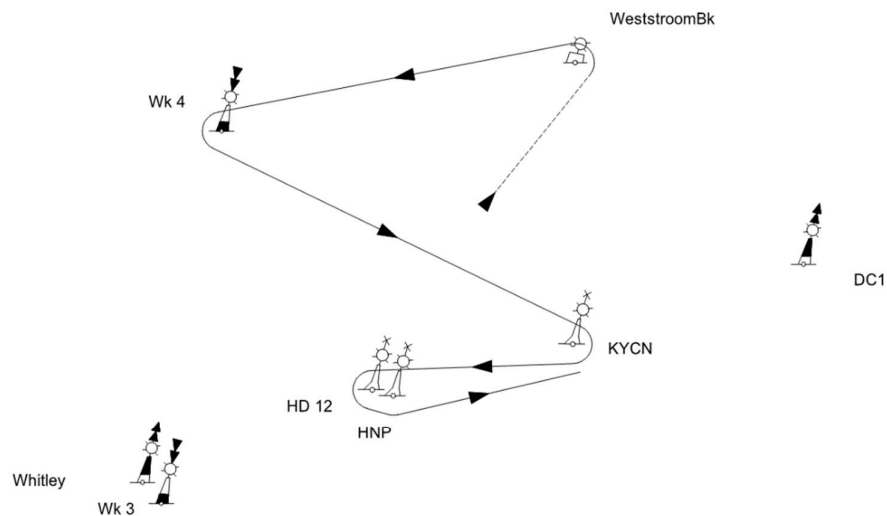
	Mark rounding order
	Start, Mark 1 (P), Wk4 (P), HNP (SB), Whitley (P), Wk3 (P), Finish

Mark	Description
Mark 1	0,7 to 1,3 NM to windward of start
	Red cubical inflatable buoy
Other	Navigational buoys
Starting mark starboard end	RC Signal boat
Finishing mark starboard end	
Starting mark port end	Orange cylindrical inflatable buoy
Finishing mark port end	KYCN Navigational buoy

Course Illustration: Course around the cans

09

Course length: 8,0 NM



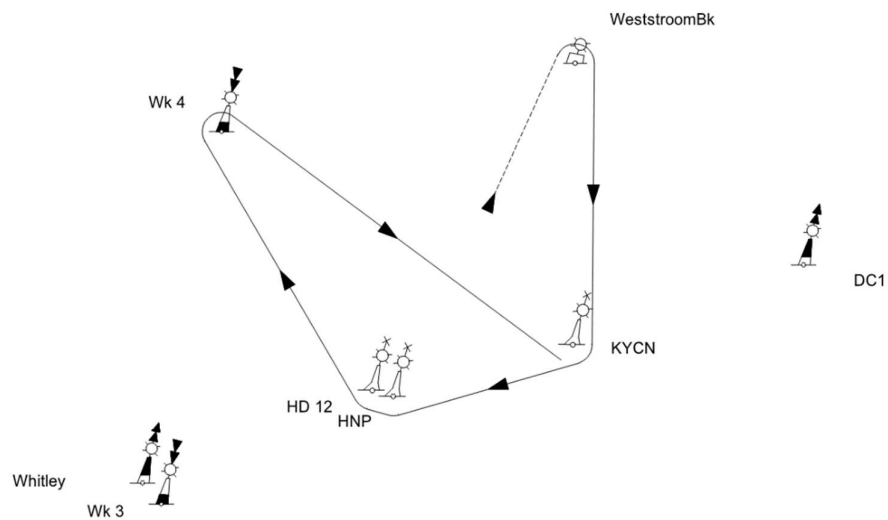
	Mark rounding order
	Start, Mark 1 (P), WeststroomBk (P), Wk4 (P), KYCN (SB), HD12 (P), HNP (P), Finish

Mark	Description
Mark 1	0,7 to 1,3 NM to windward of start
Other	Red cubical inflatable buoy
	Navigational buoys
Starting mark starboard end	RC Signal boat
Finishing mark starboard end	
Starting mark port end	Orange cylindrical inflatable buoy
Finishing mark port end	KYCN Navigational buoy

Course Illustration: Course around the cans

10

Course length: 8,0 NM



Mark rounding order	
	Start, Mark 1 (P), WeststroomBk (SB), KYCN (SB), HNP (SB), HD12 (SB), Wk4 (SB), Finish

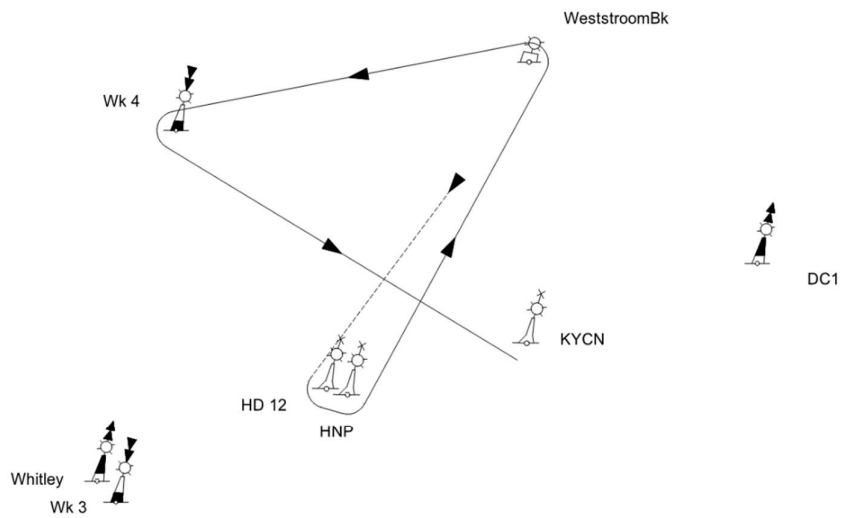
Mark	Description
Mark 1	0,7 to 1,3 NM to windward of start
Other	Red cubical inflatable buoy
	Navigational buoys
Starting mark starboard end	RC Signal boat

Finishing mark starboard end	
Starting mark port end	Orange cylindrical inflatable buoy
Finishing mark port end	KYCN Navigational buoy

Course Illustration: Course around the cans

11

Course length: 8,3 NM



	Mark rounding order
	Start, Mark 1 (P), HD12 (P), HNP (P), WeststroomBk (P), Wk4 (P), Finish

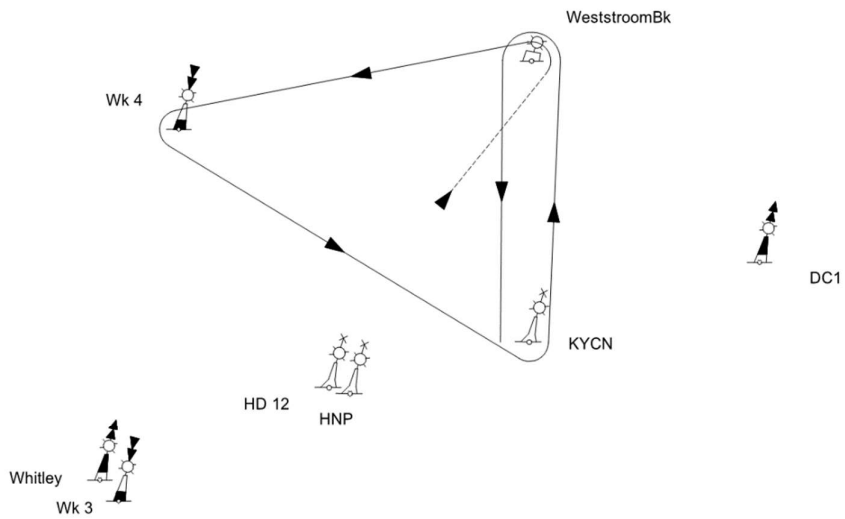
Mark	Description
Mark 1	0,7 to 1,3 NM to windward of start Red cubical inflatable buoy
Other	Navigational buoys

Starting mark starboard end	RC Signal boat
Finishing mark starboard end	
Starting mark port end	Orange cylindrical inflatable buoy
Finishing mark port end	KYCN Navigational buoy

Course Illustration: Course around the cans

12

Course length: 8,7 NM



	Mark rounding order
	Start, Mark 1 (P), WeststroomBk (P), Wk4 (P), KYCN (P), WeststroomBk (P), Finish

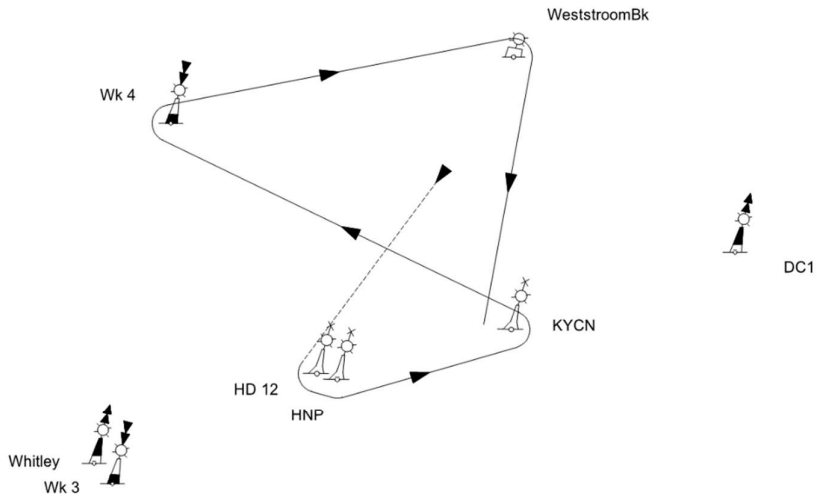
Mark	Description
------	-------------

Mark 1	0,7 to 1,3 NM to windward of start	Red cubical inflatable buoy
Other		Navigational buoys
Starting mark starboard end		RC Signal boat
Finishing mark starboard end		
Starting mark port end		Orange cylindrical inflatable buoy
Finishing mark port end		KYCN Navigational buoy

Course Illustration: Course around the cans

13

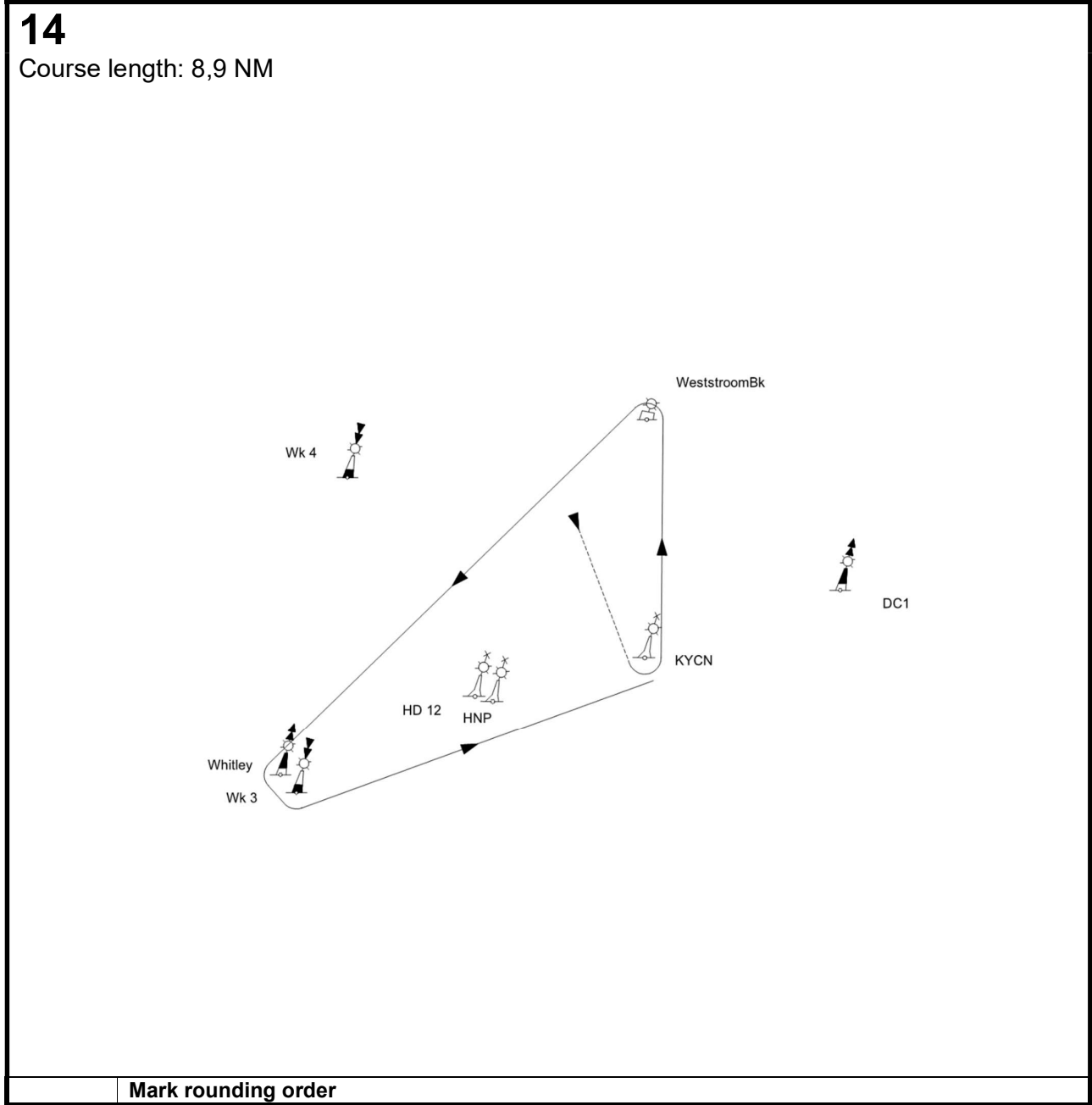
Course length: 8,7 NM



	Mark rounding order
	Start, Mark 1 (P), HD12 (P), HNP (P), KYCN (P), Wk4 (SB), WeststroomBk (SB), Finish

Mark	Description
Mark 1 0,7 to 1,3 NM to windward of start	Red cubical inflatable buoy
Other	Navigational buoys
Starting mark starboard end Finishing mark starboard end	RC Signal boat
Starting mark port end	Orange cylindrical inflatable buoy
Finishing mark port end	KYCN Navigational buoy

Course Illustration: Course around the cans



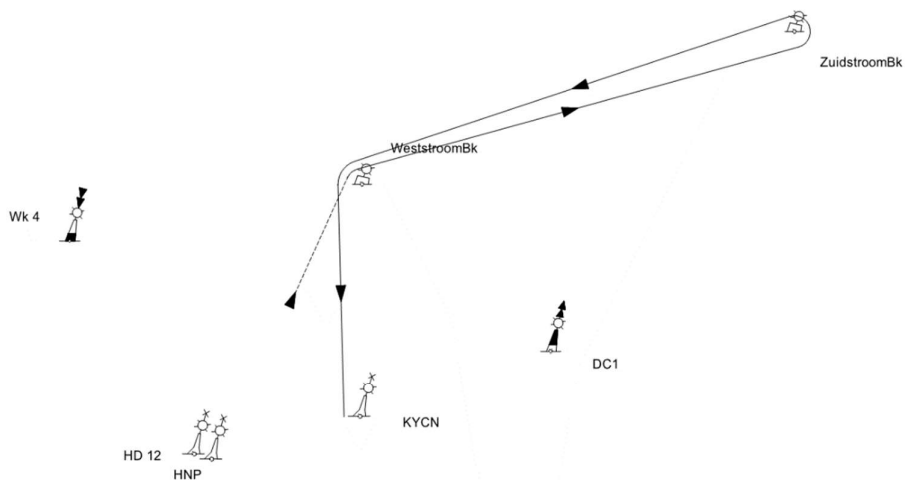
	Start, Mark 1 (P), KYCN (P), WeststroomBk (P), Whitley (P), Wk3 (P), Finish

Mark	Description
Mark 1 0,7 to 1,3 NM to windward of start	Red cubical inflatable buoy
Other	Navigational buoys
Starting mark starboard end Finishing mark starboard end	RC Signal boat
Starting mark port end	Orange cylindrical inflatable buoy
Finishing mark port end	KYCN Navigational buoy

Course Illustration: Course around the cans

15

Course length: 9,0 NM



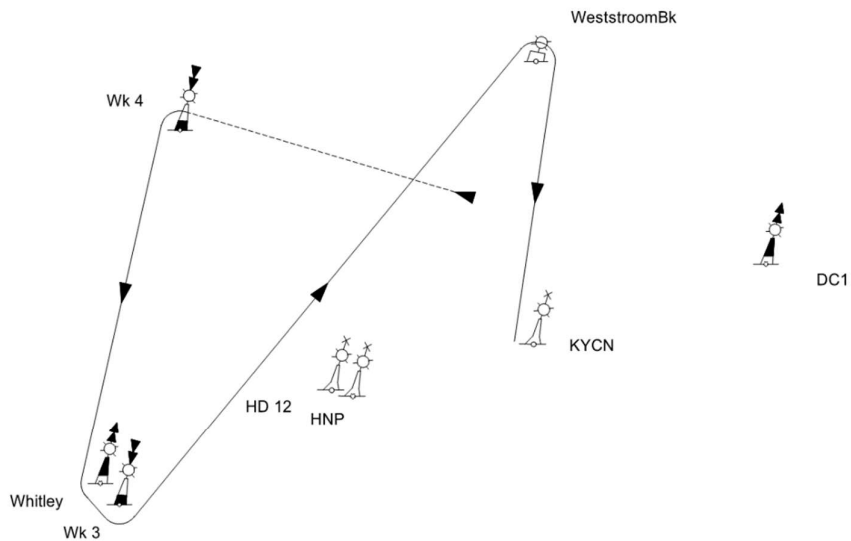
	Mark rounding order
	Start, Mark 1 (P), WeststroomBk (SB), ZuidstroomBk (P), WeststroomBk (P), Finish

Mark	Description
Mark 1	0,7 to 1,3 NM to windward of start Red cubical inflatable buoy
Other	Navigational buoys
Starting mark starboard end Finishing mark starboard end	RC Signal boat
Starting mark port end	Orange cylindrical inflatable buoy
Finishing mark port end	KYCN Navigational buoy

Course Illustration: Course around the cans

16

Course length: 9,1 NM



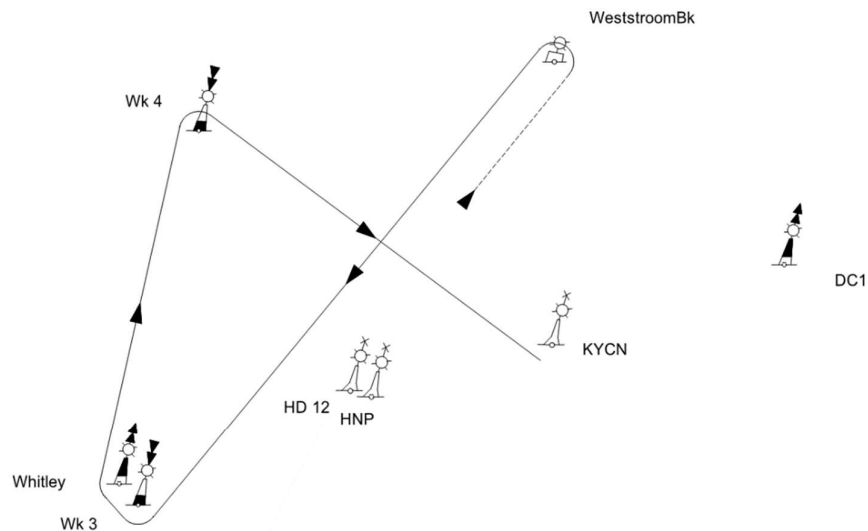
	Mark rounding order
	Start, Mark 1 (P), Wk4 (P), Whitley (P), Wk3 (P), WeststroomBk (SB), Finish

Mark	Description
Mark 1	0,7 to 1,3 NM to windward of start Red cubical inflatable buoy
Other	Navigational buoys
Starting mark starboard end Finishing mark starboard end	RC Signal boat
Starting mark port end	Orange cylindrical inflatable buoy
Finishing mark port end	KYCN Navigational buoy

Course Illustration: Course around the cans

17

Course length: 9,1 NM



Mark rounding order

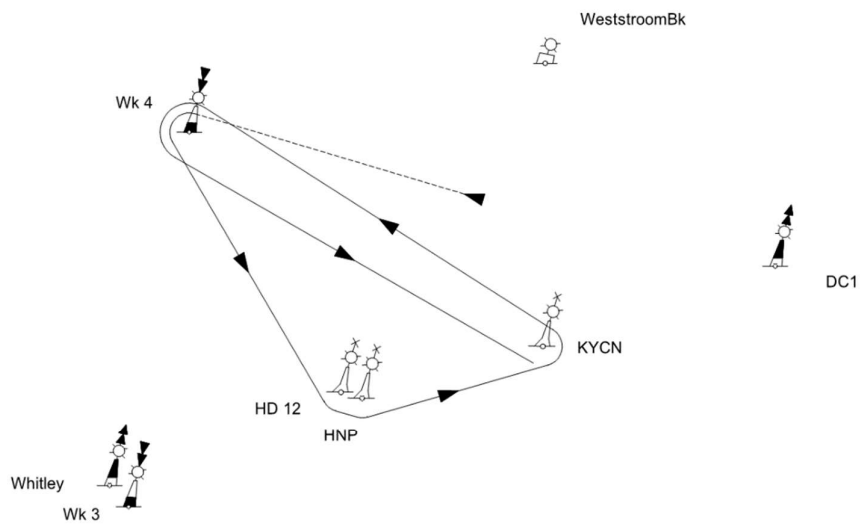
Start, Mark 1 (P), WeststroomBk (P), Wk3 (SB), Whitley (SB), Wk4 (SB), Finish

Mark	Description
Mark 1	0,7 to 1,3 NM to windward of start
Other	Red cubical inflatable buoy
	Navigational buoys
Starting mark starboard end	RC Signal boat
Finishing mark starboard end	
Starting mark port end	Orange cylindrical inflatable buoy
Finishing mark port end	KYCN Navigational buoy

Course Illustration: Course around the cans

18

Course length: 9,3 NM



	Mark rounding order
	Start, Mark 1 (P), Wk4 (P), HD12 (P), HNP (P), KYCN (P), Wk4 (P), Finish

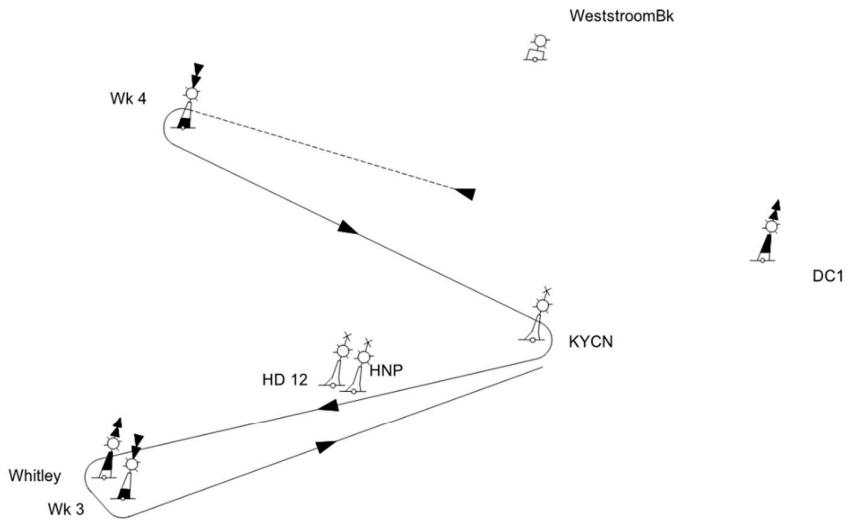
Mark	Description
Mark 1	0,7 to 1,3 NM to windward of start
Other	Red cubical inflatable buoy
	Navigational buoys
Starting mark starboard end	RC Signal boat

Finishing mark starboard end	
Starting mark port end	Orange cylindrical inflatable buoy
Finishing mark port end	KYCN Navigational buoy

Course Illustration: Course around the cans

19

Course length: 9,4 NM



	Mark rounding order
	Start, Mark 1 (P), Wk4 (P), KYCN (SB), Whitley (P), Wk3 (P), Finish

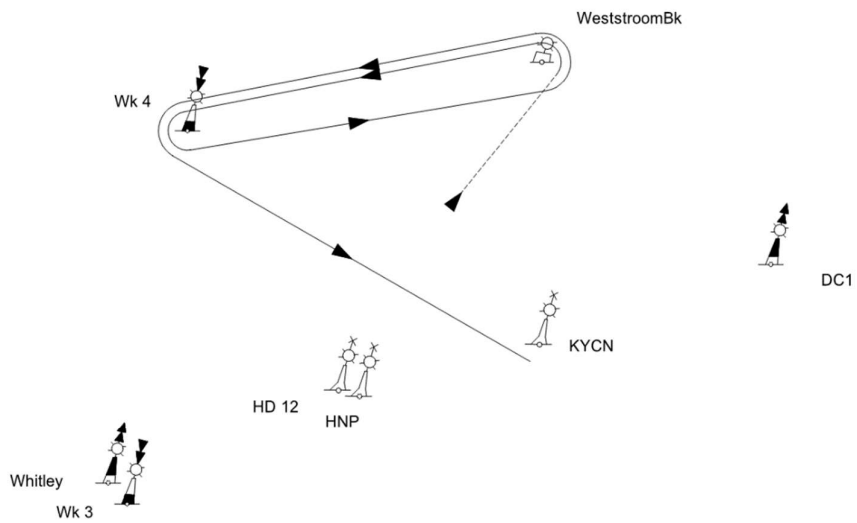
Mark	Description
Mark 1	0,7 to 1,3 NM to windward of start
Other	Red cubical inflatable buoy
	Navigational buoys

Starting mark starboard end	RC Signal boat
Finishing mark starboard end	
Starting mark port end	Orange cylindrical inflatable buoy
Finishing mark port end	KYCN Navigational buoy

Course Illustration: Course around the cans

20

Course length: 9,5 NM



	Mark rounding order
	Start, Mark 1 (P), WeststroomBk (P), Wk4 (P), WeststroomBk (P), Wk4 (P), Finish

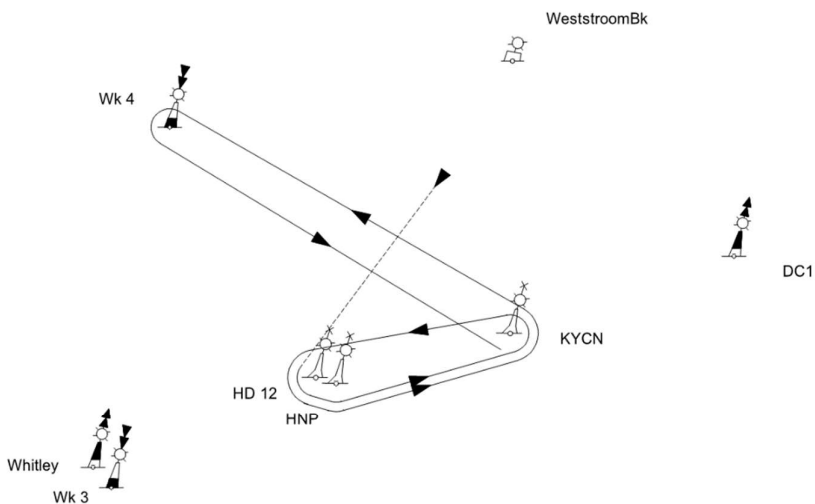
Mark	Description
------	-------------

Mark 1	0,7 to 1,3 NM to windward of start	Red cubical inflatable buoy
Other		Navigational buoys
Starting mark starboard end		RC Signal boat
Finishing mark starboard end		
Starting mark port end		Orange cylindrical inflatable buoy
Finishing mark port end		KYCN Navigational buoy

Course Illustration: Course around the cans

21

Course length: 9,7 NM



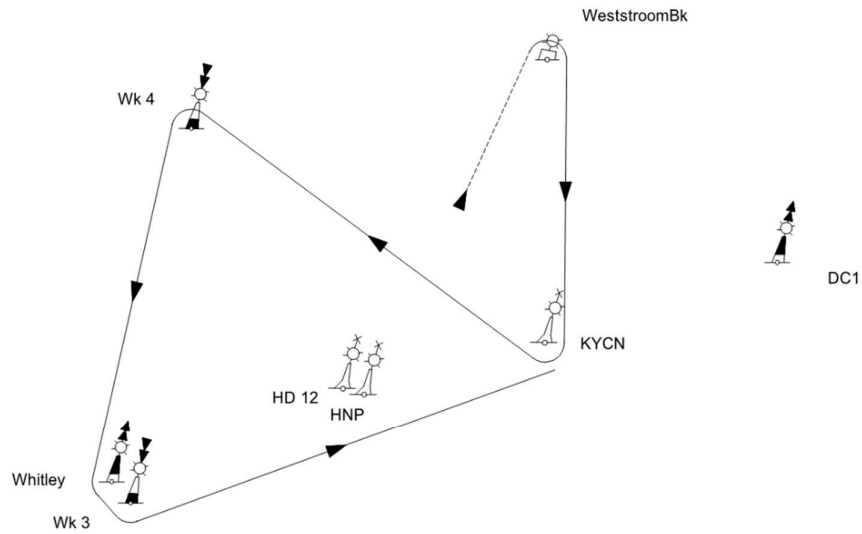
	Mark rounding order
	Start, Mark 1 (P), HD12 (SB), HNP (SB), KYCN (SB), HD12 (SB), HNP (SB), KYCN (P), Wk4 (P), Finish

Mark	Description
Mark 1 0,7 to 1,3 NM to windward of start	Red cubical inflatable buoy
Other	Navigational buoys
Starting mark starboard end Finishing mark starboard end	RC Signal boat
Starting mark port end	Orange cylindrical inflatable buoy
Finishing mark port end	KYCN Navigational buoy

Course Illustration: Course around the cans

22

Course length: 9,7 NM



Mark rounding order

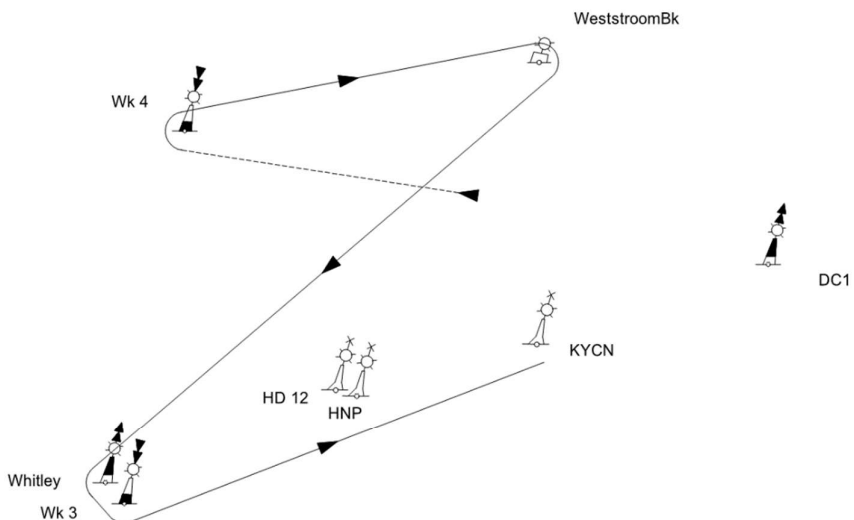
	Start, Mark 1 (P), WeststroomBk (SB), KYCN (SB), Wk4 (SB), Whitley (SB), Wk3 (SB), Finish

Mark	Description
Mark 1 0,7 to 1,3 NM to windward of start	Red cubical inflatable buoy
Other	Navigational buoys
Starting mark starboard end Finishing mark starboard end	RC Signal boat
Starting mark port end	Orange cylindrical inflatable buoy
Finishing mark port end	KYCN Navigational buoy

Course Illustration: Course around the cans

23

Course length: 9,9 NM



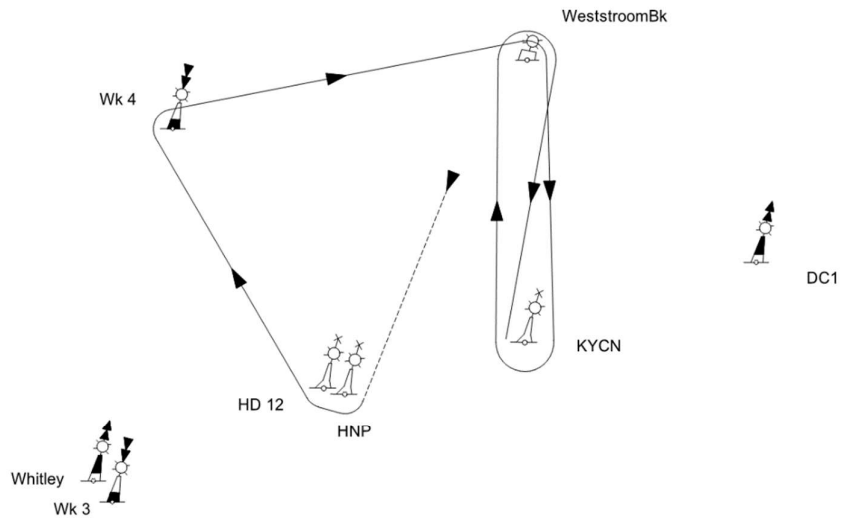
	Mark rounding order
	Start, Mark 1 (P), Wk4 (SB), WeststroomBk (SB), Whitley (P), Wk3 (P), Finish

Mark	Description
Mark 1	0,7 to 1,3 NM to windward of start
Other	Red cubical inflatable buoy
	Navigational buoys
Starting mark starboard end	RC Signal boat
Finishing mark starboard end	
Starting mark port end	Orange cylindrical inflatable buoy
Finishing mark port end	KYCN Navigational buoy

Course Illustration: Course around the cans

24

Course length: 10,1 NM



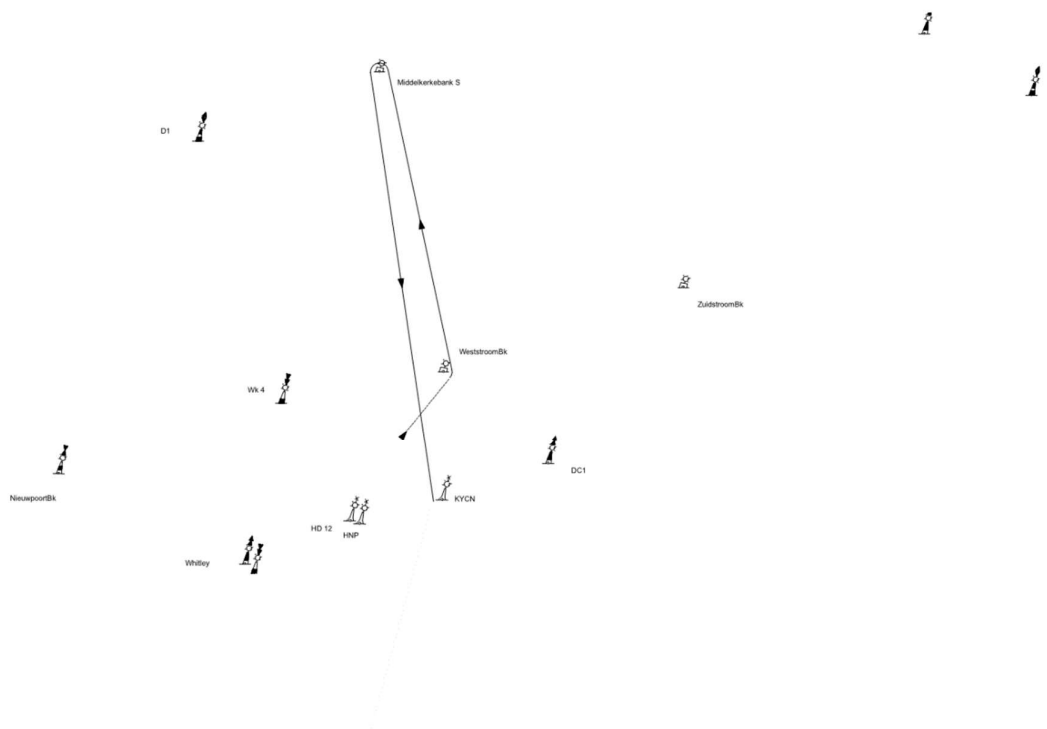
	Mark rounding order
	Start, Mark 1 (P), HNP (SB), HD12 (SB), Wk4 (SB), WeststroomBk (SB), KYCN (SB), WeststroomBk (SB), Finish

Mark	Description
Mark 1	0,7 to 1,3 NM to windward of start Red cubical inflatable buoy
Other	Navigational buoys
Starting mark starboard end Finishing mark starboard end	RC Signal boat
Starting mark port end	Orange cylindrical inflatable buoy
Finishing mark port end	KYCN Navigational buoy

Course Illustration: Course around the cans

25

Course length: 10,2 NM



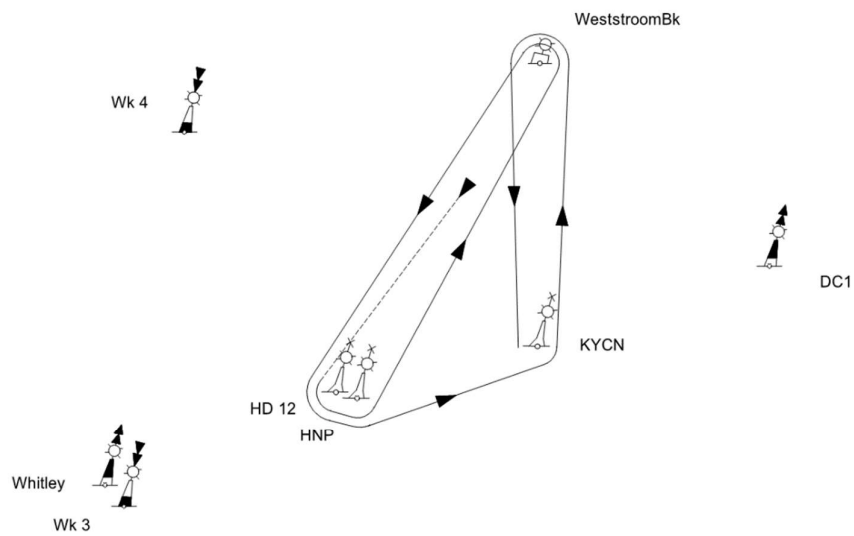
	Mark rounding order
	Start, Mark 1 (P), WeststroomBk (P), Middelkerkebank S (P), Finish

Mark	Description
Mark 1	0,7 to 1,3 NM to windward of start
Other	
Starting mark starboard end	RC Signal boat
Finishing mark starboard end	
Starting mark port end	Orange cylindrical inflatable buoy
Finishing mark port end	KYCN Navigational buoy

Course Illustration: Course around the cans

26

Course length: 10,3 NM



	Mark rounding order
	Start, Mark 1 (P), HD12 (P), HNP (P), WeststroomBk (P), HD12 (P), HNP (P), KYCN (P), WeststroomBk (P), Finish

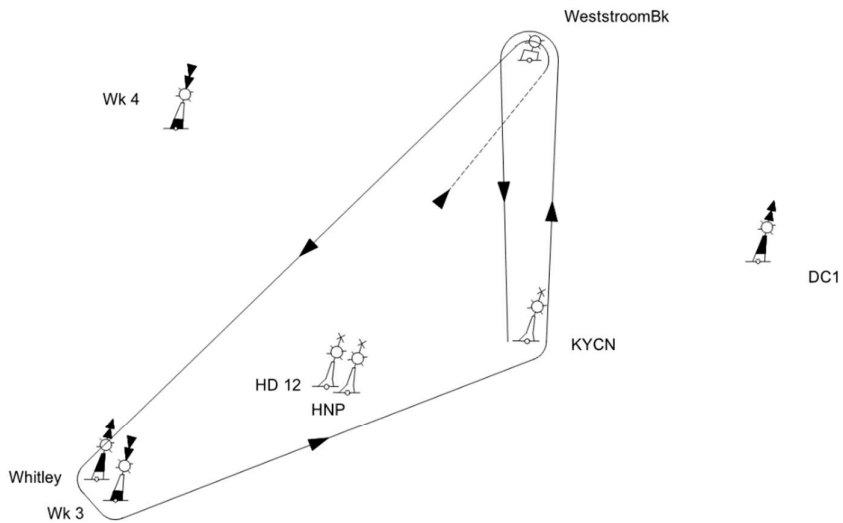
Mark	Description
Mark 1	0,7 to 1,3 NM to windward of start
Other	Red cubical inflatable buoy
	Navigational buoys
Starting mark starboard end Finishing mark starboard end	RC Signal boat

Starting mark port end	Orange cylindrical inflatable buoy
Finishing mark port end	KYCN Navigational buoy

Course Illustration: Course around the cans

27

Course length: 10,3 NM



	Mark rounding order
	Start, Mark 1 (P), WeststroomBk (P), Whitley (P), Wk3 (P), KYCN (P), WeststroomBk (P), Finish

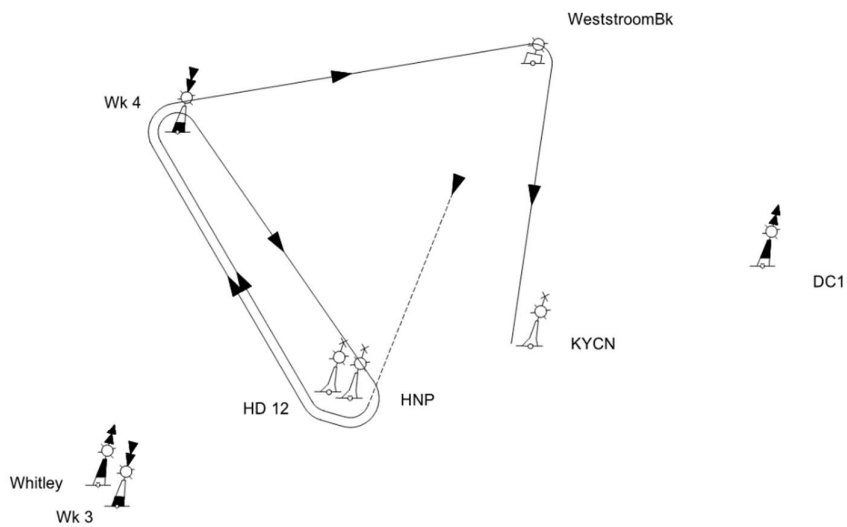
Mark	Description
Mark 1	0,7 to 1,3 NM to windward of start
Other	Red cubical inflatable buoy
	Navigational buoys

Starting mark starboard end	RC Signal boat
Finishing mark starboard end	RC Signal boat
Starting mark port end	Orange cylindrical inflatable buoy
Finishing mark port end	KYCN Navigational buoy

Course Illustration: Course around the cans

28

Course length: 10,5 NM



	Mark rounding order
	Start, Mark 1 (P), HNP (SB), HD12 (SB), Wk4 (SB), HNP (SB), HD12 (SB), Wk4 (SB), WeststroomBk (SB), Finish

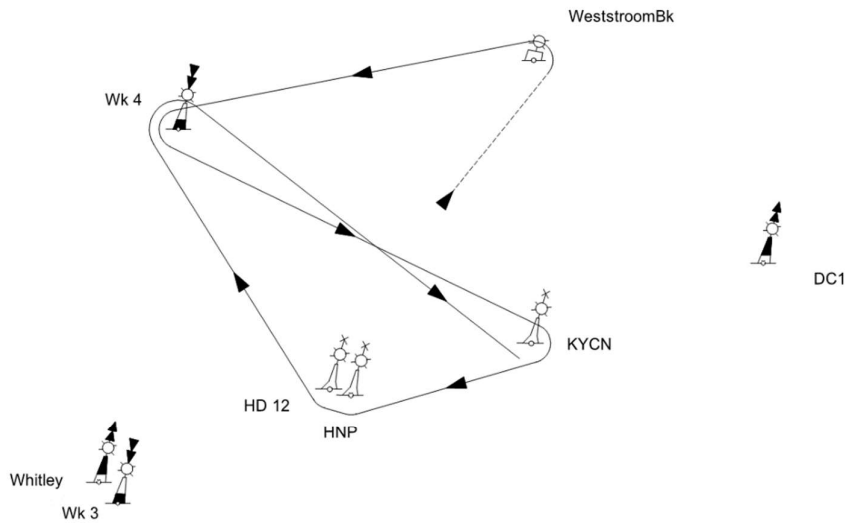
Mark	Description
Mark 1	0,7 to 1,3 NM to windward of start Red cubical inflatable buoy
Other	Navigational buoys

Starting mark starboard end Finishing mark starboard end	RC Signal boat
Starting mark port end	Orange cylindrical inflatable buoy
Finishing mark port end	KYCN Navigational buoy

Course Illustration: Course around the cans

29

Course length: 10,6 NM



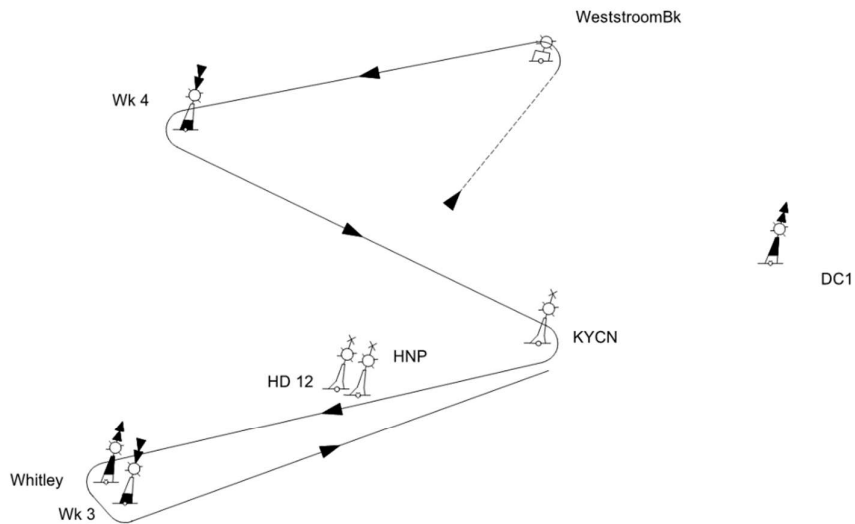
	Mark rounding order
	Start, Mark 1 (P), WeststroomBk (P), Wk4 (P), KYCN (SB), HNP (SB), HD12 (SB), Wk4 (SB), Finish

Mark	Description
Mark 1 0,7 to 1,3 NM to windward of start	Red cubical inflatable buoy
Other	Navigational buoys
Starting mark starboard end	RC Signal boat
Finishing mark starboard end	
Starting mark port end	Orange cylindrical inflatable buoy
Finishing mark port end	KYCN Navigational buoy

Course Illustration: Course around the cans

30

Course length: 10,6 NM



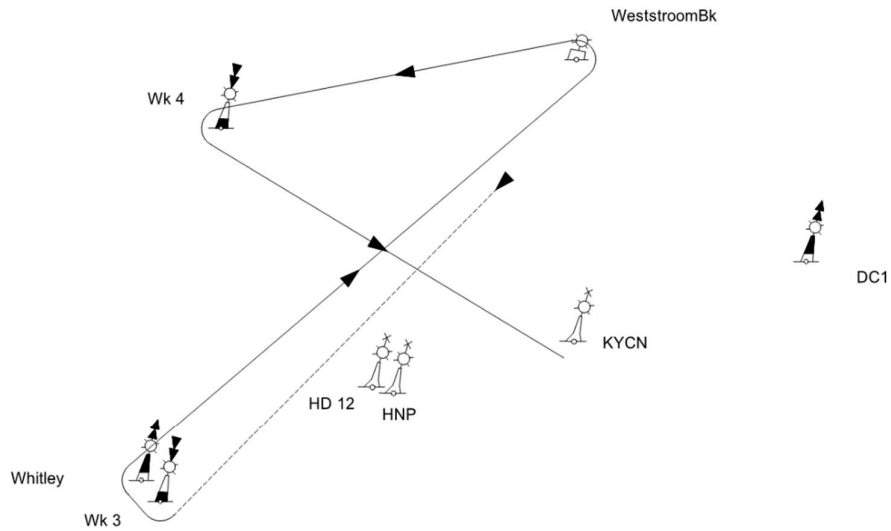
Mark rounding order
Start, Mark 1 (P), WeststroomBk (P), Wk4 (P), KYCN (SB), Whitley (P), Wk3 (P), Finish

Mark	Description
Mark 1 0,7 to 1,3 NM to windward of start	Red cubical inflatable buoy
Other	Navigational buoys
Starting mark starboard end Finishing mark starboard end	RC Signal boat
Starting mark port end	Orange cylindrical inflatable buoy
Finishing mark port end	KYCN Navigational buoy

Course Illustration: Course around the cans

31

Course length: 10.6 NM



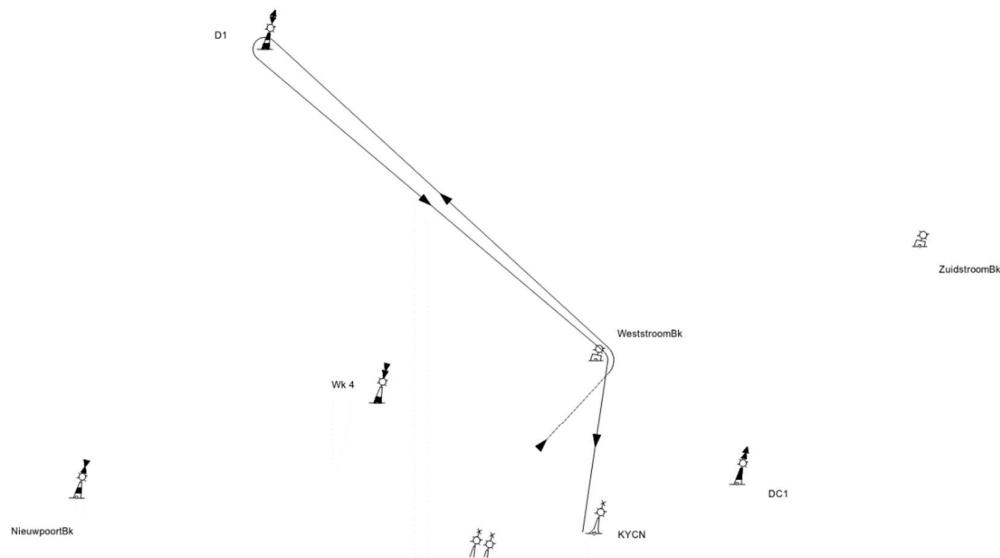
	Mark rounding order
	Start, Mark 1 (P), Wk3 (SB), Whitley (SB), WeststroomBk (P), Wk4 (P), Finish

Mark	Description
Mark 1 0,7 to 1,3 NM to windward of start	Red cubical inflatable buoy
Other	Navigational buoys
Starting mark starboard end Finishing mark starboard end	RC Signal boat
Starting mark port end	Orange cylindrical inflatable buoy
Finishing mark port end	KYCN Navigational buoy

Course Illustration: Course around the cans
--

32

Course length: 10,9 NM



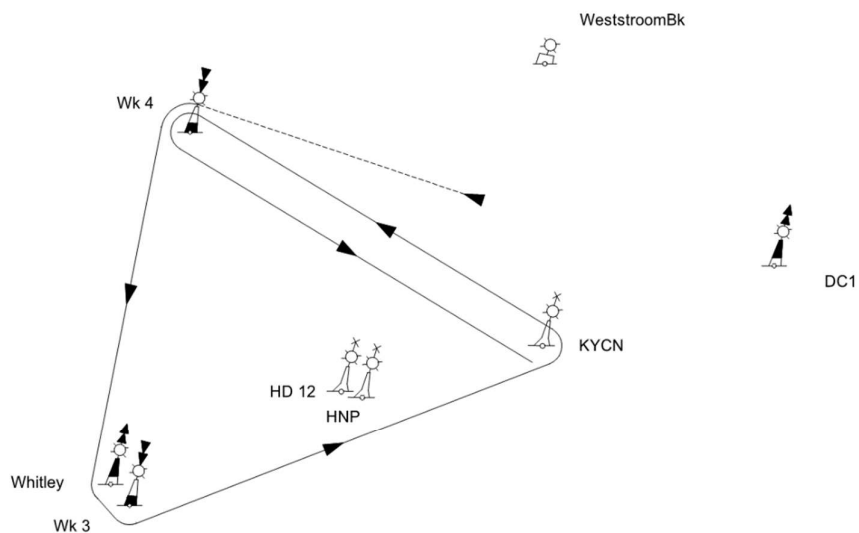
	Mark rounding order
	Start, Mark 1 (P), WeststroomBk (P), D1 (P), WeststroomBk (SB), Finish

Mark	Description
Mark 1	0,7 to 1,3 NM to windward of start Red cubical inflatable buoy
Other	Navigational buoys
Starting mark starboard end Finishing mark starboard end	RC Signal boat
Starting mark port end	Orange cylindrical inflatable buoy
Finishing mark port end	KYCN Navigational buoy

Course Illustration: Course around the cans

33

Course length: 11,0 NM



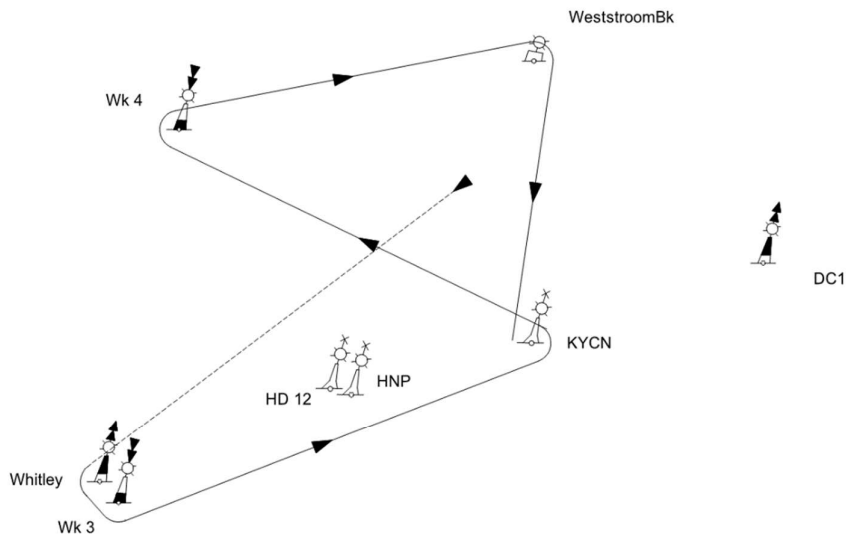
	Mark rounding order
	Start, Mark 1 (P), Wk4 (P), Whitley (P), Wk3 (P), KYCN (P), Wk4 (P), Finish

Mark	Description
Mark 1	0,7 to 1,3 NM to windward of start
	Red cubical inflatable buoy
Other	Navigational buoys
Starting mark starboard end	RC Signal boat
Finishing mark starboard end	
Starting mark port end	Orange cylindrical inflatable buoy
Finishing mark port end	KYCN Navigational buoy

Course Illustration: Course around the cans

34

Course length: 11,3 NM



Mark rounding order

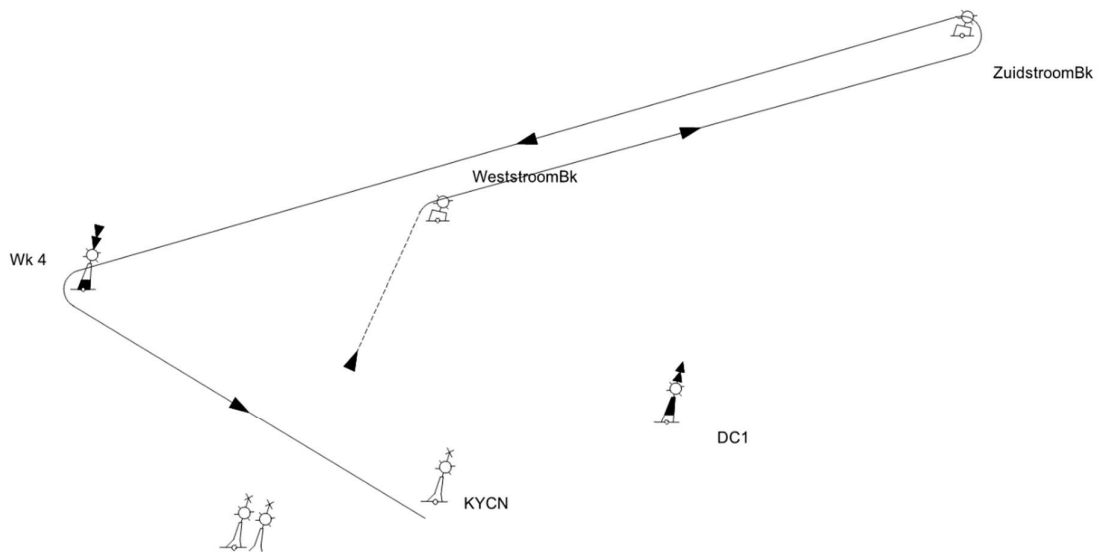
Start, Mark 1 (P), Whitley (P), Wk3 (P), KYCN (P), Wk4 (SB), WeststroomBk (SB), Finish

Mark	Description
Mark 1	0,7 to 1,3 NM to windward of start
Other	Red cubical inflatable buoy
	Other
	Starting mark starboard end
	Finishing mark starboard end
	RC Signal boat
	Starting mark port end
	Orange cylindrical inflatable buoy
	Finishing mark port end
	KYCN Navigational buoy

Course Illustration: Course around the cans

35

Course length: 11,5 NM



	Mark rounding order
	Start, Mark 1 (P), WeststroomBk (SB), ZuidstroomBk (P), Wk4 (P), Finish

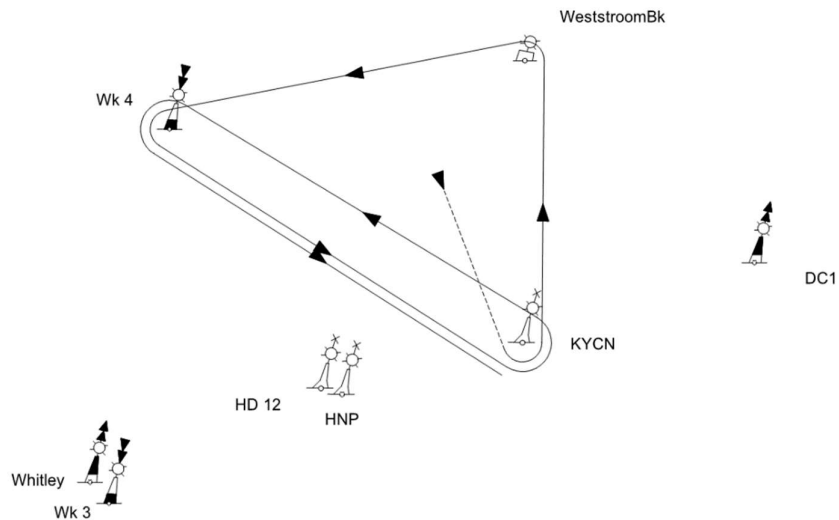
Mark	Description
Mark 1	0,7 to 1,3 NM to windward of start Red cubical inflatable buoy
Other	Navigational buoys
Starting mark starboard end	RC Signal boat

Finishing mark starboard end	
Starting mark port end	Orange cylindrical inflatable buoy
Finishing mark port end	KYCN Navigational buoy

Course Illustration: Course around the cans

36

Course length: 11,6 NM



	Mark rounding order
	Start, Mark 1 (P), KYCN (P), WeststroomBk (P), Wk4 (P), KYCN (P), Wk4 (P), Finish

Mark	Description
Mark 1	0,7 to 1,3 NM to windward of start Red cubical inflatable buoy
Other	Navigational buoys

Starting mark starboard end Finishing mark starboard end	RC Signal boat
Starting mark port end	Orange cylindrical inflatable buoy
Finishing mark port end	KYCN Navigational buoy

Course Illustration: Course around the cans

37 - Spare
Course length:

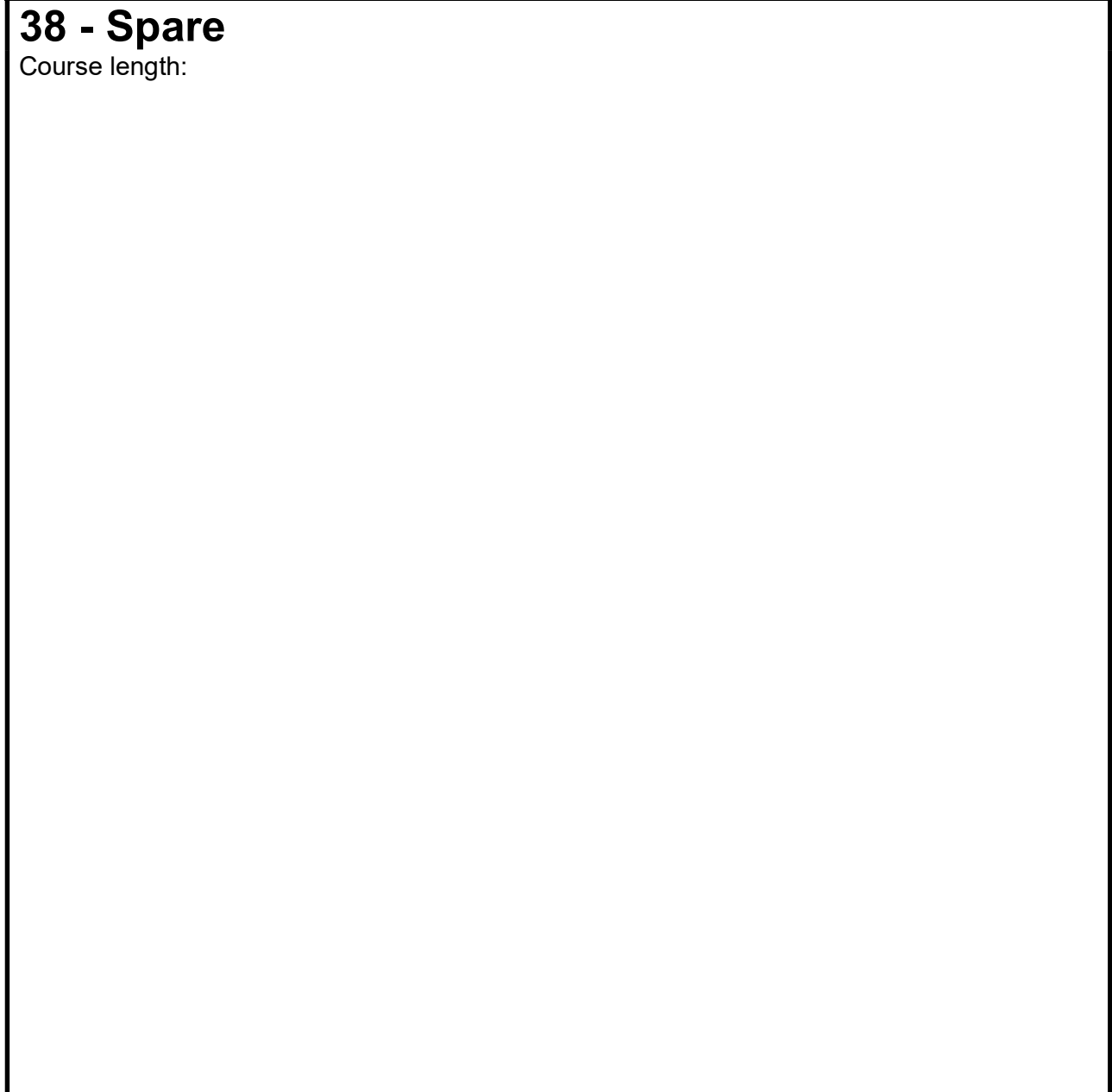
	Mark rounding order

Mark	Description
-------------	--------------------

Mark 1	
Other	
Starting mark starboard end	
Finishing mark starboard end	
Starting mark port end	
Finishing mark port end	

Course Illustration: Course around the cans

38 - Spare
Course length:



	Mark rounding order

Mark	Description
Mark 1	
Other	
Starting mark starboard end	
Finishing mark starboard end	
Starting mark port end	
Finishing mark port end	

Course Illustration: Course around the cans

40 - Spare

Course length:

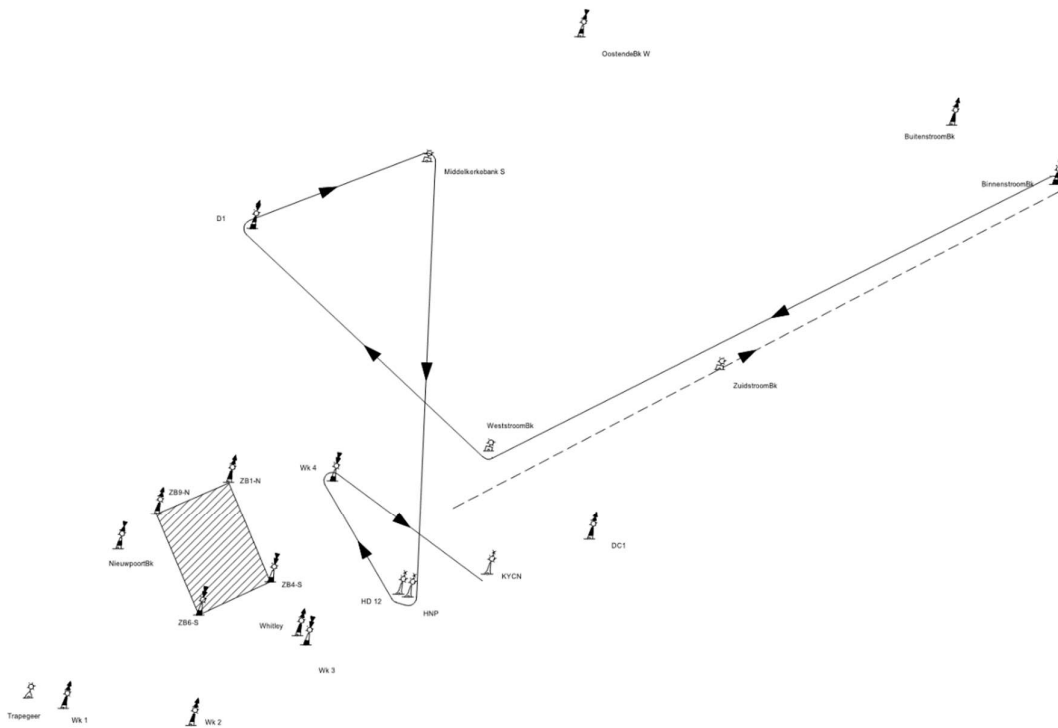
	Mark rounding order

Mark	Description
Mark 1	
Other	
Starting mark starboard end Finishing mark starboard end	
Starting mark port end	
Finishing mark port end	

Course Illustration: Course around the cans

41

Course length: 31,3 NM



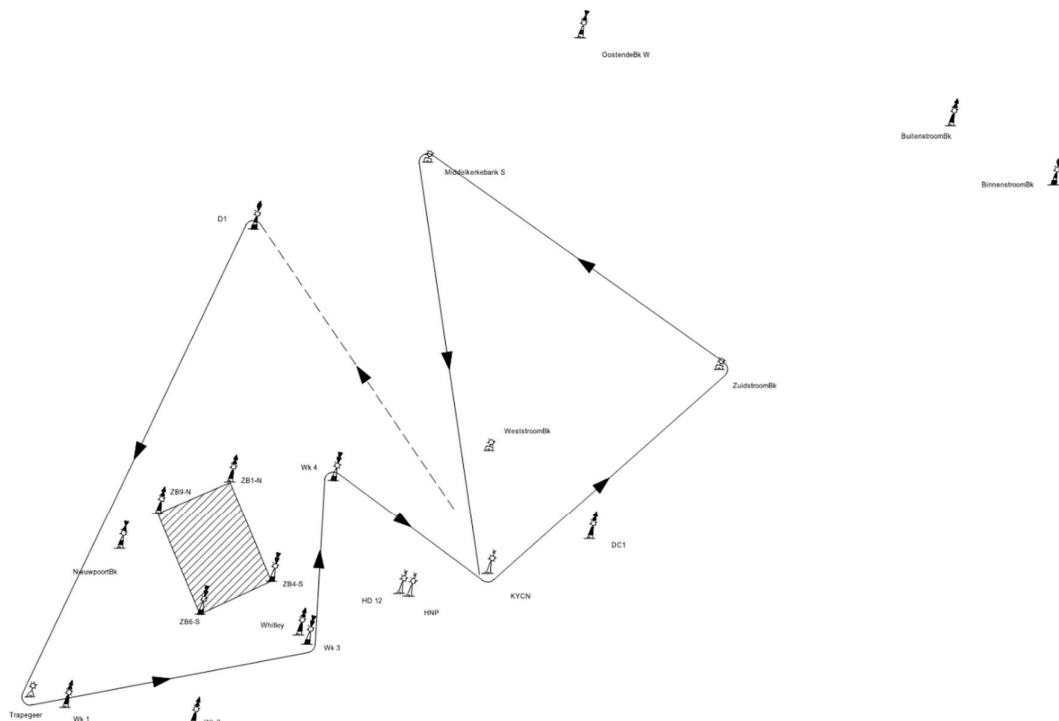
	Mark rounding order
	Start, Mark 1 (P), BinnestroomBk (P), WeststroomBk (SB), D1 (SB), Middelkerkebank S (SB), HNP (SB), HD12 (SB), Wk4 (SB), Finish.

Mark	Description
Mark 1	0,7 to 1,3 NM to windward of start
Other	
Starting mark starboard end	RC Signal boat
Finishing mark starboard end	
Starting mark port end	Orange cylindrical inflatable buoy
Finishing mark port end	KYCN Navigational buoy

Course Illustration: Course around the cans

42

Course length: 31,4 NM



Mark rounding order

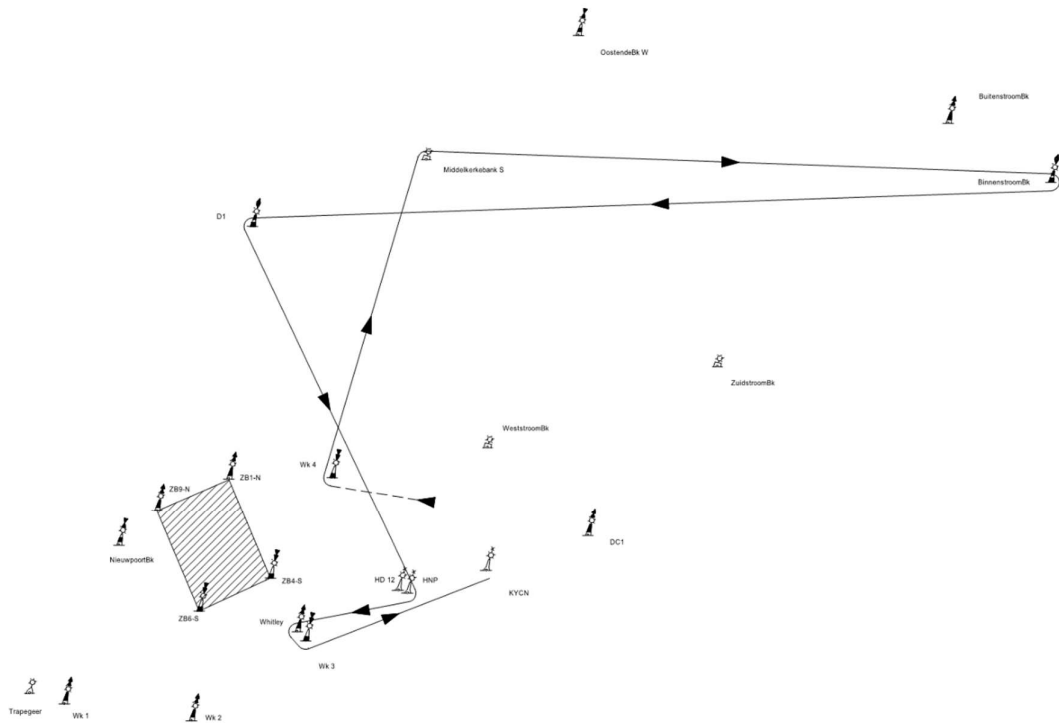
Start, Mark 1 (P), D1 (P), Trapegeer (P), Wk3 (P), Wk4 (SB), KYCN (P), ZuidstroomBk (P), Middelkerkebank S (P), Finish.

Mark	Description
Mark 1	0,7 to 1,3 NM to windward of start
Other	Navigational buoys
Starting mark starboard end	RC Signal boat
Finishing mark starboard end	
Starting mark port end	Orange cylindrical inflatable buoy
Finishing mark port end	KYCN Navigational buoy

Course Illustration: Course around the cans

43

Course length: 31,7 NM



Mark rounding order

Start, Mark 1 (P), Wk4 (SB), Middelkerkebank S (SB), BinnenstroomBk (SB), D1 (P), HNP (SB), Whitley (P), Wk3 (P), Finish.

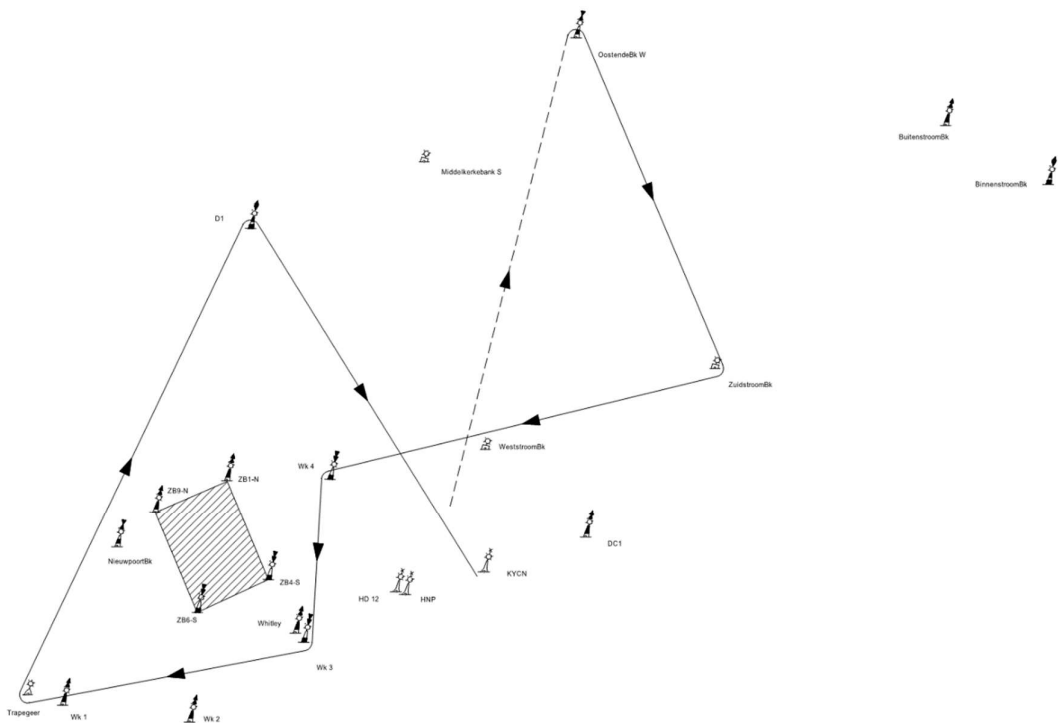
Mark	Description
Mark 1	0,7 to 1,3 NM to windward of start Red cubical inflatable buoy
Other	Navigational buoys
Starting mark starboard end Finishing mark starboard end	RC Signal boat

Starting mark port end	Orange cylindrical inflatable buoy
Finishing mark port end	KYCN Navigational buoy

Course Illustration: Course around the cans

44

Course length: 32,1 NM



	Mark rounding order
	Start, Mark 1 (P), OostendeBk-W (SB), ZuidstroomBk (SB), Wk4 (P), WK3 (SB), Trapegeer (SB), D1 (SB), Finish.

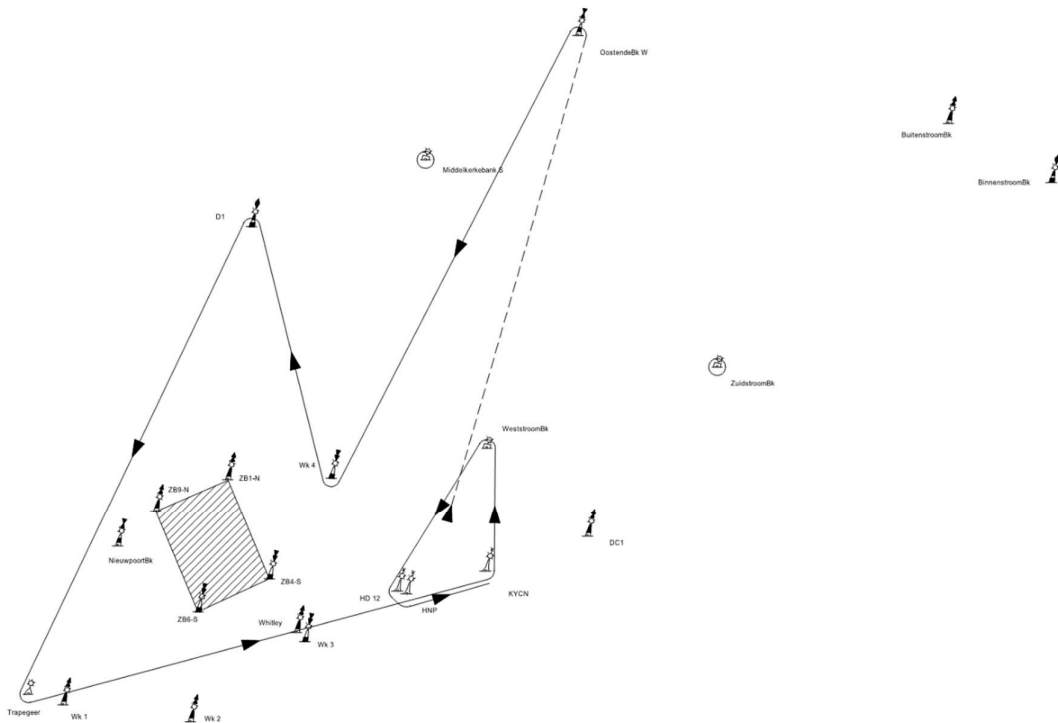
Mark	Description
Mark 1	0,7 to 1,3 NM to windward of start
Other	Navigational buoys

Starting mark starboard end	RC Signal boat
Finishing mark starboard end	RC Signal boat
Starting mark port end	Orange cylindrical inflatable buoy
Finishing mark port end	KYCN Navigational buoy

Course Illustration: Course around the cans

45

Course length: 32,1 NM



Mark rounding order

Start, Mark 1 (P), OostendeBk-W (P), Wk4 (SB), D1 (P), Trapegeer (P), KYCN (P), WeststroomBk (P), HD12 (P), HNP (P), Finish.

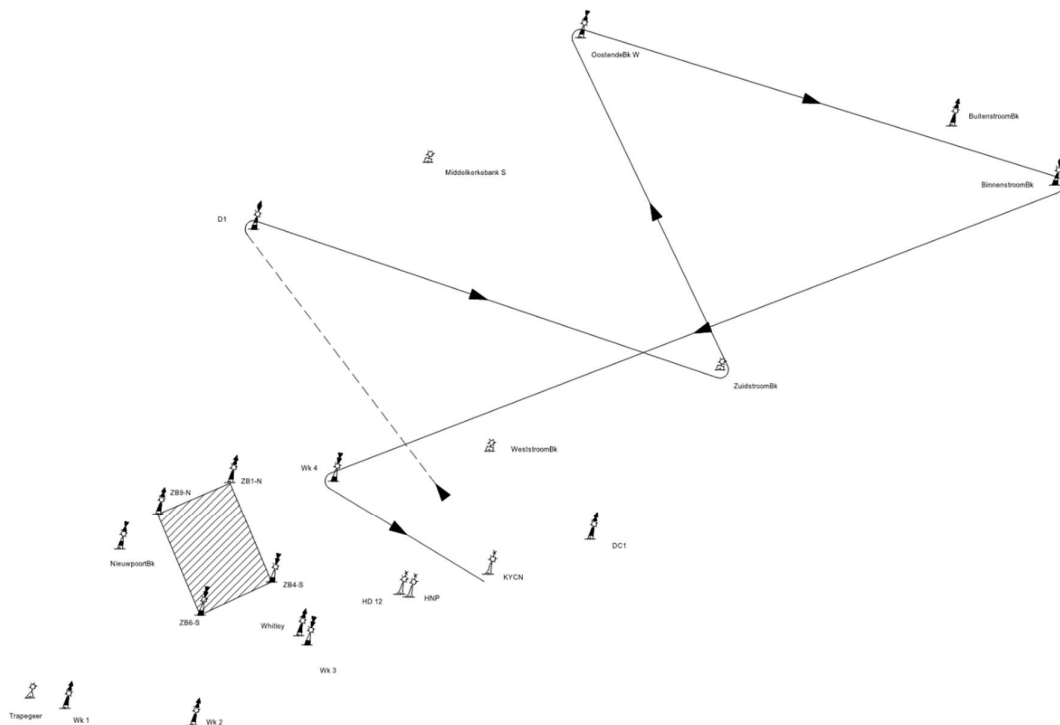
Mark	Description
Mark 1	0,7 to 1,3 NM to windward of start Red cubical inflatable buoy
Other	Navigational buoys

Starting mark starboard end Finishing mark starboard end	RC Signal boat
Starting mark port end	Orange cylindrical inflatable buoy
Finishing mark port end	KYCN Navigational buoy

Course Illustration: Course around the cans

46

Course length: 32,2 NM



Mark rounding order

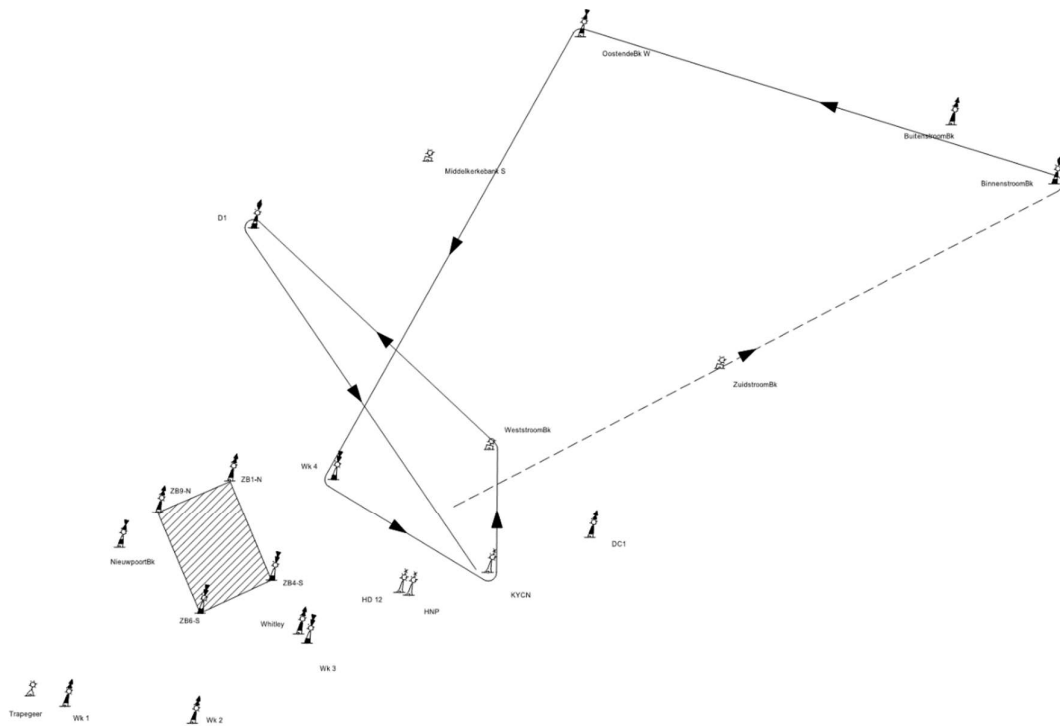
Start, Mark 1 (P), D1 (SB), ZuidstroomBk (P), OostendeBk-W (SB), BinnenstroomBk (SB), Wk4 (P), Finish

Mark	Description
Mark 1 0,7 to 1,3 NM to windward of start	Red cubical inflatable buoy
Other	Navigational buoys
Starting mark starboard end Finishing mark starboard end	RC Signal boat
Starting mark port end	Orange cylindrical inflatable buoy
Finishing mark port end	KYCN Navigational buoy

Course Illustration: Course around the cans

47

Course length: 33,2 NM



Mark rounding order

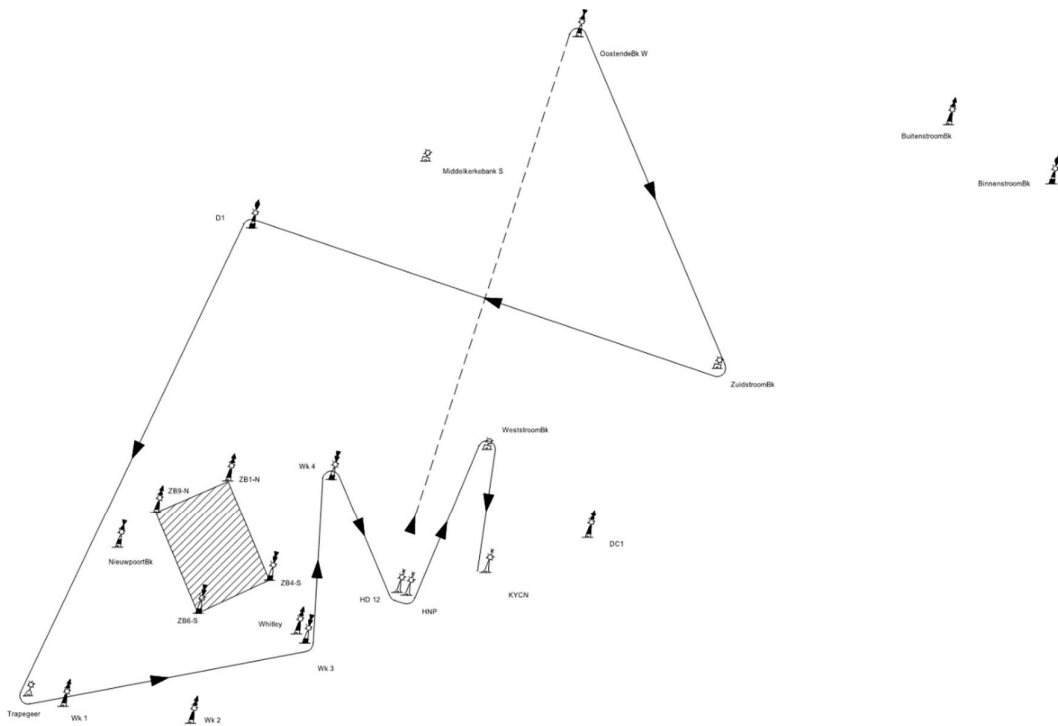
Start, Mark 1 (P), BinnestroomBk (P), OostendeBk-W (P), Wk4 (P), KYCN (P), WeststroomBk (P), D1 (P), Finish

Mark		Description
Mark 1	0,7 to 1,3 NM to windward of start	Red cubical inflatable buoy
Other		Navigational buoys
	Starting mark starboard end	RC Signal boat
	Finishing mark starboard end	
	Starting mark port end	Orange cylindrical inflatable buoy
	Finishing mark port end	KYCN Navigational buoy

Course Illustration: Course around the cans

48

Course length: 33,2 NM



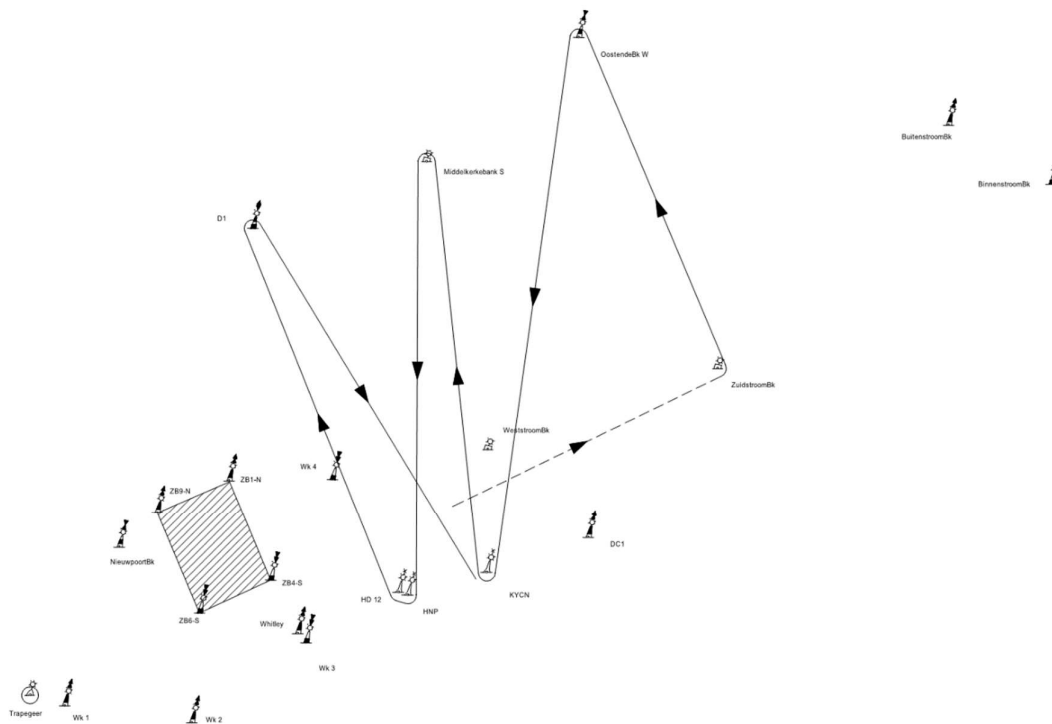
	Mark rounding order
	Start, Mark 1 (P), OostendeBk-W (SB), ZuidstroomBk (SB), D1 (P), Trapegeer (P), Wk3 (P), Wk4 (SB), HD12 (P), HNP (P), WeststroomBk (SB), Finish.

Mark	Description
Mark 1 0,7 to 1,3 NM to windward of start	Red cubical inflatable buoy
Other	Navigational buoys
Starting mark starboard end Finishing mark starboard end	RC Signal boat
Starting mark port end	Orange cylindrical inflatable buoy
Finishing mark port end	KYCN Navigational buoy

Course Illustration: Course around the cans
--

49

Course length: 34,9 NM



	Mark rounding order
	Start, Mark 1 (P), ZuidstroomBk (P), OostendeBk-W (P), KYCN (SB), Middelerkerbank S (P), HNP (SB), HD12 (SB), D1 (SB), Finish

Mark	Description
Mark 1	0,7 to 1,3 NM to windward of start
Other	Navigational buoys
Starting mark starboard end	RC Signal boat
Finishing mark starboard end	
Starting mark port end	Orange cylindrical inflatable buoy
Finishing mark port end	KYCN Navigational buoy

Course Illustration: Course around the cans

50 Spare

Course length:

	Mark rounding order

Mark	Description
Mark 1	0,7 to 1,3 NM to windward of start
Other	Red cubical inflatable buoy
	Navigational buoys
Starting mark starboard end Finishing mark starboard end	RC Signal boat
Starting mark port end	Orange cylindrical inflatable buoy
Finishing mark port end	KYCN Navigational buoy

